

*University of Strathclyde*

# **Energy Systems Research Unit**

**The ESP-r System  
for  
Building Energy Simulation**

**User Guide Version 9 Series**

**October 1997  
(Printed June 1998)**

**ESRU Manual U97/1**

University of Strathclyde  
Energy Systems Research Unit  
75 Montrose Street  
Glasgow G1 1XJ, UK

<i>Email</i>	esru@strath.ac.uk
<i>Phone</i>	+44 141 548 3986
<i>Fax</i>	+44 141 552 8513

# Table of Contents

Development history and acknowledgements  
About this User Guide

## Section One: General description of ESP-r

- 1.0 Introduction
- 1.1 Purpose of ESP-r
- 1.2 Structure of ESP-r
- 1.3 Machine environment
- 1.4 System documentation
- 1.5 Further information

## Section Two: A guide to effective system use

- 2.0 Introduction
- 2.1 Simulation strategy
- 2.2 General details of program operation
- 2.3 Data file management

## Section Three: Exercises

- 3.0 Introduction
- 3.1 List of exercises

## Section Four: Example applications

- 4.0 Introduction
- 4.1 Parametric studies
- 4.2 Upgrading strategy
- 4.3 The issue of cost
- 4.4 Innovative design
- 4.5 Low energy housing
- 4.6 Re-design
- 4.7 Critical control
- 4.8 Feasibility study
- 4.9 Late design-stage use
- 4.10 Comfort
- 4.11 Speculative development
- 4.12 Training Exemplars
  - 4.12.1 Single office
  - 4.12.2 Simple building
  - 4.12.3 Small house
  - 4.12.4 Large house
  - 4.12.5 Test cells
  - 4.12.6 Special focus
  - 4.12.7 Office block
  - 4.12.8 Plant

## Section Five: Theoretical basis and validity

- 5.0 Introduction
- 5.1 Theoretical basis
- 5.2 Validity
- 5.3 Model value

## Appendices

- Summary of ESP-r's Data Model
- ESP-r Implementation Procedures
- Good Practice Guide for ESP-r Developers
- List of ESP-r References
- Adding Models to ESP-r



## **Development history and acknowledgements**

The ESP-r system has evolved to its present form over more than two decades. From 1974 to 1977 Joe Clarke developed the initial prototype as part of his doctoral research. Then, over the period 1977 to 1980, with funding from the (then) UK Science and Engineering Research Council (SERC), ESP-r was refined in a number of respects: the system was reorganised and documented, validation trials commenced, multi-zone processing was implemented and a graphics orientated user interface was established. From 1981 through 1986 Professor Clarke was joined by Dr Don McLean and, with further funding from SERC and from the CEC, ESP-r's capabilities were extended by the addition of dynamic plant simulation, the inclusion of building air flow modelling, a move to low cost Unix<sup>TM</sup> workstation technology and the installation of expert system primitives.

In 1987, the Energy Simulation Research Unit (ESRU) was formed to address the problems confronting the further evolution of building energy and environmental simulation. As part of its research portfolio, ESRU has continued to evolve ESP-r - most notably within the framework of the UK Department of Energy's (now Trade and Industry) Passive Solar Programme, the CEC's PASSYS project (a 10 member country concerted action in Passive Solar Architecture), a SERC funded project to establish an intelligent front-end for the package and within a number of ongoing projects concerned with plant and control simulation. These activities ensured that ESP-r continued to evolve, in terms of further validation, technical extensions and user interface improvements.

Over the past two decades many individuals have made valuable contributions to ESP-r developments. The most important of these have come from our research colleagues at the University of Strathclyde who have contributed much in the way of computational methods and technical support. In particular we are indebted to Tom Maver, Harvey Sussock, Alan Bridges, Don Stearn and Iain Forrest (all presently or previously of ABACUS). One other colleague springs readily to mind: Damian MacRandal, now a project leader within the Informatics Department at the Rutherford Appleton Laboratory. He was the driving force behind our move to Unix workstations.

We also extend our thanks to several other individuals: to Fred Winklemann of the Lawrence Berkeley Laboratory who helped to develop ESP-r's time-step control mechanism; to Cor Pernot of the FAGO group in Eindhoven who installed ESP-r's comfort routines and continues to take an active interest in the system; to Jeremy Cockroft, now with Honeywell, who worked on the original air flow solver upon which we have built over the years; to Dr Dechao Tang, Dr Essam Aasem, Dr Abdullatif Nakhi, Dr Cezar Negrao and Dr Tin-tai Chow, all formerly PhD students at ESRU, who worked on ESP-r's plant, moisture flow and CFD algorithms.

At the present time the researchers actively involved in ESP-r developments at ESRU include Joe Clarke, Mark Evans, Jon Hand, Jan Hensen, Milan Janak, Cameron Johnstone, Nick Kelly, Iain Macdonald, John MacQueen, Paul Strachan.

## **About this User Guide**

We assume that the user is familiar with some of the more elementary Unix commands and is able to use a Unix workstation. The main purpose of this User Guide is to introduce a new user of ESP-r to the system and to provide training guidance.

Note that ESP-r has extensive in-built tutorial and help facilities which can be consulted throughout the system familiarisation process. Detailed information may also be found in ESRU's World-Wide-Web pages (<http://www.strath.ac.uk/Departments/ESRU/>) and in the Appendices to this User Guide which cover the system's data requirements, operational details, worked examples, adding new features to ESP-r, developers good practice guide, implementation procedure and software structure.

This User Guide only comprises the essential reading material for the first time user of ESP-r, organised in the following sections:

- 1 Outline of the system structure and examples of the types of design questions ESP-r can be used to answer.
- 2 General guidance on how to make effective use of the system.
- 3 A series of consecutive exercises allowing the first time user to become familiar with - and appreciate - the comprehensive features of the system.
- 4 A number of short case study descriptions illustrating the use of ESP-r in practice.
- 5 Some information and references on the theoretical basis and validity of the system.

# **Section One**

## **General description of ESP-r and its associated documentation**

### **Contents**

- 1.0 Introduction
- 1.1 Purpose of ESP-r
- 1.2 Structure of ESP-r
- 1.3 Machine environment
- 1.4 System documentation
- 1.5 Further information

## 1.0 Introduction

This first section of the User Guide gives a general overview of ESP-r (*Environmental Systems Performance; r for "research"*); a computing environment for building and/or plant energy simulation. The application potential of ESP-r is outlined by citing some typical design questions which the model has been used to answer. Then, the program modules which comprise the system are outlined, along with the essential hardware environment. Finally, some further information sources are indicated.

ESP-r is the outcome of model development projects funded over the years by the UK Science and Engineering Research Council (now EPSRC) and the European Commission's DGXII. Significant contributions have also been made by many individuals as outlined in the *Development history and acknowledgments* section.

### 1.1 Purpose of ESP-r

ESP-r is a transient energy simulation system which is capable of modelling the energy and fluid flows within combined building and plant systems when constrained to conform to control action. The package comprises a number of interrelating program modules addressing project management, simulation, results recovery and display, database management and report writing.

One or more zones within a building are defined in terms of geometry, construction and usage profiles. These zones are then inter-locked to form a building, in whole or in part, and, optionally, the leakage distribution is defined to enable air flow simulation. The plant network is then defined by connecting individual components. And, finally, the multi-zone building and multi-component plant are connected and subjected to simulation processing against user-defined control. The entire data preparation exercise is achieved interactively, and with the aid of pre-existing databases which contain standard (or user-defined) constructions, event profiles and plant components. Utility modules exist to permit an increase in simulation rigour if the related data is available.

A central Project Manager allows importing/ exporting of building geometry from/ to CAD packages and other specialised simulation environments such as Radiance for lighting simulation.

ESP-r is equally applicable to existing buildings and new designs, with or without advanced technological features. The system offers sophisticated input/output facilities which enable the user to answer such design questions as

- What, and when, are the peak building or plant loads and what are the rank-ordered causal energy flows?
- What will be the effect of some design change, such as increasing wall insulation, altering the window shape and size, changing the glazing type or distribution, introducing daylight control devices, re-zoning the building, re-configuring the plant or changing the heating/ cooling control regime?
- What is the optimum plant start time or the most effective algorithm for weather anticipation?
- How will comfort levels vary throughout the building?
- What benefits can be expected from the different possible lighting control strategies?

- What are the relative merits of different heating and cooling systems and their associated controls?
- How will temperature stratification, in terms of zone sensor and terminal unit location, affect energy consumption and comfort control?
- What contribution does building infiltration and zone-coupled air flow make to the total boiler or chiller load and how can this be minimised?
- How do suggested design alterations affect air flow and fresh air distribution (i.e. indoor air quality) within the building?
- What is the effect of special glazings (such as thermotropic, holographic, low-e or electrochromic glazing) on summer overheating?
- Which are the benefits from architectural building features such as atria, sunspaces, courtyards, etc?
- What is the contribution (in terms of energy saving and thermal comfort) of a range of passive solar (heating or cooling) features?
- What is the optimum arrangement of constructional elements to encourage good load levelling and hence efficient plant operation?
- What are the energy consequences of non-compliance with prescriptive energy regulations or, conversely, how should a design be modified to come within some deemed-to-satisfy performance target?
- Which heat recovery system performs best under a range of typical operating conditions?

and so on. This allows the user to understand better the interrelation between design and performance parameters, to then identify potential problem areas, and so implement and test appropriate building, plant and/or control modifications. The design to result is more energy conscious with better comfort levels attained throughout.

## 1.2 Structure of ESP-r

Figure 1.1 shows the relationship between the program and database modules which form the simulation environment. In this User Guide only the Users-side of the environment will be addressed.

The *Project Manager* allows the interactive definition of some building and plant configuration which is to be subjected to some weather influence and simulated over time. The complete description of the building and plant configuration is called the product model. All data items, as input, are subjected to strict range and legality checks before being directed to disk file for later recall. To ease the input burden, the user is given access to standard databases so that constructions, event profiles and plant components can be accessed by name or simple code number reference. Also, many input items have a corresponding default value so that typed responses can vary as a function of the design information to hand at any time during a design's evolution. The Project Manager also controls user access to the other ESP-r programs such as the Simulator for simulation and the Results Analyser for analysing the time-series of state variables as generated by the Simulator.



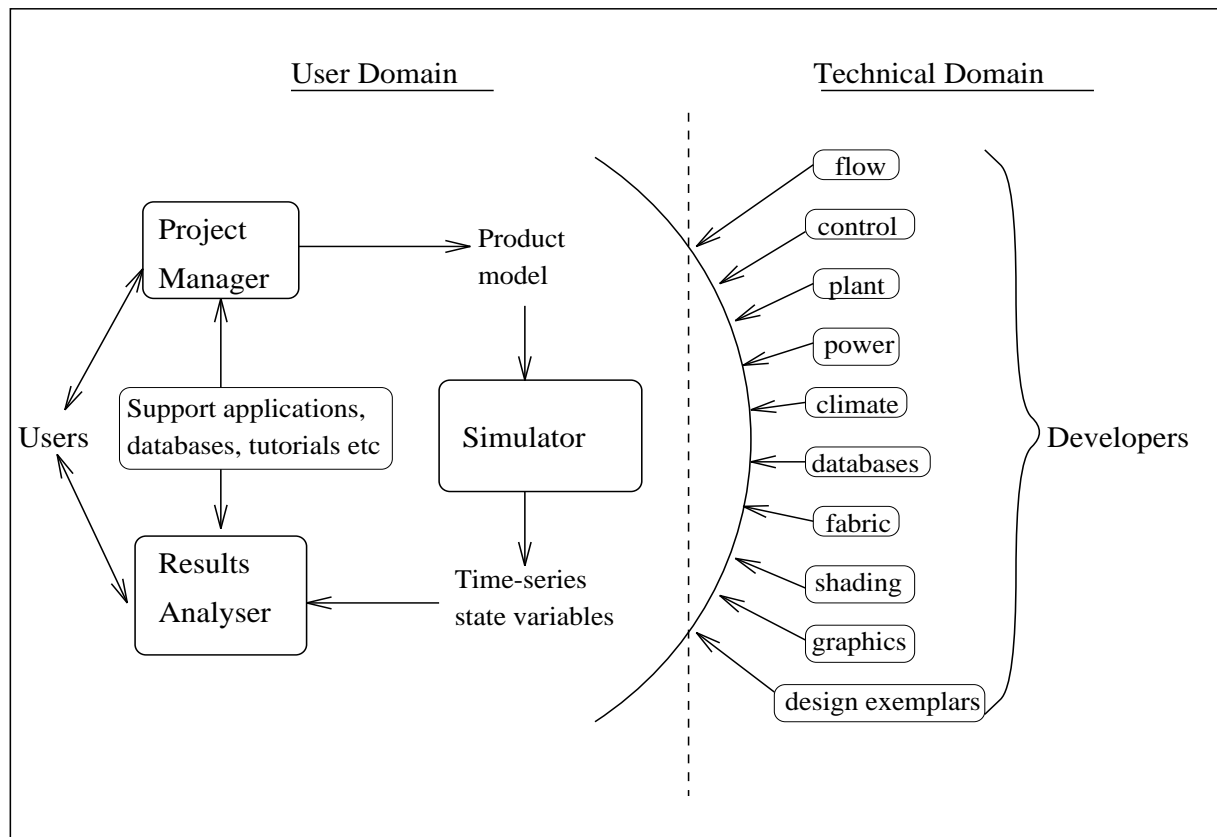


Figure 1.1 Structure of ESP-r

The *Tutorial Module* manages a number of tutorials ranging from a general introduction to tutorials on how to use ESP-r in a real world design context. The on-line tutorial mechanism is very powerful since it allows a user to look something up quickly when actually using ESP-r. Since they are in-built, the tutorials are much more easily kept up-to-date than this User Guide.

The *Event Profiles Database Management Module* manages a number of standard or project-specific profiles which define the time dependent variations in zone occupancy, lighting, plant control and miscellaneous appliance usage. These profiles can then be accessed by the Project Manager to define zone and plant behaviour.

The *Plant Components Database Management Module* manages a plant components database. For each plant component, a summary description is held, along with the data required by the Simulator to allow the time dependent generation of the coefficients of the differential equations which represent component heat and mass balance. Component matrix template data is also held to dictate the whole-system matrix building undertaken at each simulation time-step. The database is then accessed from the Project Manager to enable plant network formulation by component interconnection.

The *Climate Database Management Module* manages and analyses climatic data collections. A climate collection spans any period from one day to one year and contains hourly values of dry bulb temperature, direct normal or total horizontal solar intensity, diffuse horizontal solar intensity, wind speed, wind direction and relative humidity. The

climate management module offers solar radiation prediction, curve fitting to daily maximum and minimum data, statistical analysis, graphical and tabular display and general data management. The climate data is required by the Simulator to generate the time dependent boundary conditions for the building and plant configuration.

The *Simulator* is the building and plant simulation engine which predicts building and plant energy/ fluid flows by a rigorous numerical method. The building/ plant network is divided into a large number of finite volumes. Then, at each time-step as a simulation proceeds, an energy and mass balance is applied for all volumes, giving rise to a differential matrix for the entire system. This is then solved by custom matrix processing software in terms of any user-imposed control objectives.

The *Results Analysis Module* operates on the simulation results located in a database by the Simulator. A variety of output options are available: perspective visualisations, results interrogation, statistical analysis, graphical display, tabulations, frequency binning and 3D plotting.

The *Insolation and Shading Module* is a utility module which predicts the time-series shading of external zone surfaces (opaque and transparent) as caused by facade and site obstructions and/or the time-series insolation of internal zone surfaces (opaque and transparent) as caused by solar penetration through windows. The predictions for any surface can, optionally, be archived in a shading/insolation database for access and use within a simulation.

The *View Factors Module* computes the black body view factors between each zone surface pairing for use by the Simulator to evaluate internal longwave radiative exchanges. It also evaluates zone comfort level variations.

Building/ plant fluid flow simulation can be performed by the Simulator in tandem with the heat balance calculations. In this case full account will be taken of buoyancy driven air movements between outside and inside and between internal zones. If pressure driven air flow dominates, it is possible to use the *Flows Simulation Module* in stand-alone mode to predict infiltration and zone-coupled air flow. Buoyancy effects are still included but correspond to fixed zone temperatures assigned by the user.

The *Construction Data Management Module* manages (creates, modifies, edits and lists) primitive and composite constructions databases. The primitives database contains the thermophysical properties of conductivity, density, specific heat, solar absorptivity and emissivity for a number of standard homogeneous elements. Diffusion resistance factors are also held as required by ESP-r's interstitial condensation computations. A second, project-related database can also be created to hold multilayered constructions formed from elements extracted from the primitives' database. Both databases can then be accessed from the Project Manager as required.

A number of ESP-r modules create and/or manipulate random access, binary disk files such as the constructions databases, the event profiles database, and the simulation results database. They also allow for the transformation of ESP-r's binary files to ASCII format and vice versa. This permits the transmission of binary databases to other computer sites (via tape for example) and, if a user is experienced, direct file editing.

In normal use, the three main modules, the Project Manager, the Simulator and the Results Analyser, are used to investigate building and/or plant performance and, by iteration, to assess the consequences of any change to system design or control. The

database modules help to reduce the input burden and the utility modules exist to allow the subsystem they address to be treated with greater rigour, if this can be justified by the design objectives and data to hand.

The theories underlying ESP-r and the validity of the Simulator are summarised in Section 5 and presented, in detail, in the following references:

- Clarke J A *Energy Simulation in Building Design*, Adam Hilger Ltd, Bristol and Boston, 1985.
- Tang D *Modelling of Heating and Air-Conditioning Systems* PhD Thesis, University of Strathclyde, 1985.
- Hensen J L M *On the Thermal Interaction of Building Structure and Heating and Ventilating System*, PhD Thesis, University of Eindhoven, 1991.
- Aasem E O *Practical Simulation of Buildings and Air-Conditioning Systems in the Transient Domain* PhD Thesis, University of Strathclyde, 1993.
- Negrao C O R *Conflation of Computational Fluid Dynamics and Building Thermal Simulation* PhD Thesis, University of Strathclyde, 1995.
- Nakhi A E *Adaptive Construction Modelling Within Whole Building Dynamic Simulation* PhD Thesis, University of Strathclyde, 1995.
- Chow T T *Air-Conditioning Plant Component Taxonomy by Primitive Parts* PhD Thesis, University of Strathclyde, 1995.

### 1.3 Machine environment

ESP-r requires the following hardware and software:

- A UNIX<sup>TM</sup> workstation<sup>#</sup> offering X-Windows and with at least 8 MBytes RAM. Implementations exist for SUN and Silicon Graphics platforms.
- A disk capacity to store the executables, manuals, tutorials, training examples (~25 MBytes), perhaps source code (~20 MBytes) and simulation results (~2 MBytes per zone-year at a one hour time step).
- Fortran77 and C compilers.
- A laser writer for graphical hard copy.

### 1.4 System documentation

In terms of usage, this User Guide and the on-line tutorial facilities of ESP-r are the main sources of documentation. This documentation is included in the source code distribution of ESP-r. In addition, a number of papers concerning ESP-r development and application can be found in the literature

As indicated in the Table of Contents, the User Guide has a number of appendices which are available from ESRU on request and for a nominal fee. These papers and technical reports cover issues such as:

- How to add new entities such as climate data, project-specific construction databases and plant components.
- A list of training assignments enabling an instructor to assess whether the training material is absorbed properly, and enabling the trainee to check whether the training

material is understood.

- Good practice guidelines for researchers interested in developing or expanding parts of ESP-r.
- A bibliography describing much of ESP-r's technical detail and philosophy. This list includes books, journal articles, conference papers and internal ESRU reports. In some cases PostScript versions of these publications are available on the ESRU *ftp server*. To access these documents, ftp to *ftp.strath.ac.uk* and login as *anonymous* with your email address as the password. The documents will be found in directory *Esru\_public/documents*.
- A summary of the tasks to be undertaken when implementing ESP-r at a particular site.
- A summary of ESP-r's underlying data model.
- Some step-by-step worked examples of simulation projects.

### 1.5 Further information

For research use the University of Strathclyde is normally able to offer a free system licence. The restrictions imposed by this licence is primarily that the licensee cannot undertake commercial work or pass copies to a third party. A commercial licence is also available at nominal cost. Should you wish to obtain a research licence then we will require details on the person within your organisation who is authorised to sign the licence agreement on behalf of your organisation.

Although the research licence is free, it is often the case that a new ESP-r site will incur a nominal expense. For example it may be appropriate to send someone to one of the ESP-r courses which we organise regularly at ESRU (the cost is approximately £500 per person). We strongly recommend this course of action for all new users to ensure that the learning process is as short and painless as possible. In addition we are obliged to charge a fixed sum of £300 to cover the cost of setting up a new user (establishing the licence agreement, giving help with implementation, supplying tapes, manuals etc). From previous experience it has been found that this is an average requirement in terms of ESRU staff time, but please do contact us if this payment presents a significant difficulty.

Our preferred mode of distribution of ESP-r is by *ftp* (file transfer protocol) from the University of Strathclyde's *ftp server*. This is fast and offers the possibility of regular, painless updates. (Because ESP-r is under active development at a growing number of sites there are frequent updates and revisions.) However, if these facilities are not available in your institution then the delivery medium can be tape.

ESP-r is a building and plant energy simulation environment which is under development at various research centres throughout Europe and elsewhere. These developments involve both enhancements and new developments to the existing system as well as validation activities and application related research.

The people working with ESP-r keep in contact via an electronic communication platform. The purpose of this is to keep each other informed about ongoing and planned developments, system related publications, new results, emerged problems, upcoming releases, etc. To join, simply email the string "subscribe esp-r <your first name> <your last name>" to *listproc@strath.ac.uk*. After your name has been registered, you can

communicate with other subscribers by sending messages to *esp-r@strath.ac.uk*. Please note that any e-mail messages received by the virtual user *esp-r@strath.ac.uk* will be forwarded unmoderated to all people currently subscribed.

Further technical, operational or commercial details on ESP-r may be obtained from ESRU at the address on the front of this User Guide. Alternatively, you may want to browse through our World-Wide-Web pages, which can be accessed from <http://www.strath.ac.uk/Departments/ESRU/>.

# **Section Two**

## **A guide to effective system use**

### **Contents**

- 2.0 Introduction
- 2.1 Simulation strategy
- 2.2 General outline of program operation
- 2.3 Data file management

## 2.0 Introduction

In use ESP-r can be divided into two distinct parts.

The first is concerned with establishing a valid data model (description of the building and/or plant configuration) for simulation. This will involve the use of the Project Manager and, optionally but usually, one or more of database management modules. The utility modules can then be used to increase the detail of the simulation to follow, if this is deemed necessary.

The second part is concerned with the simulation processing and subsequent results analysis. This will involve the use of the Simulator and the Results Analyser. Note that all ESP-r modules are invoked from the Project Manager.

In using ESP-r it is not important to know all the relationships between the ESP-r program modules and the system's data structures. However for a deeper appreciation these relationships are shown in Figure 2.1.

To work with ESP-r you need to be able to cope with a range of technical concepts relating to material properties, control systems, and the like. Information on the data requirements of ESP-r is held on-line and is accessible through the Project Manager (via its tutorial facility). Additional details are given in a separate document "Summary of ESP-r's Data Model".

For each zone in the building a geometry, construction and operations file must be established. Then, optionally and to increase simulation rigour, one or more of the following zone files can be set up to replace the default schemes implied by the data of the essential files: a shading/insolation file, a blind/shutter control file, a view factor file, an air flow file, a casual gain (control) file and a convection coefficients file. The existence of these optional files is indicated by the entries of a zone utilities file created for the purpose. The system configuration file is now set up to define the zones and, perhaps, the plant components which will participate in a simulation. Following this, the configuration control file is established to define the control to be imposed on building zones and plant components. All of these files are created and/or edited via the Project Manager. This program module can also be used to establish the data sets as required by the *Fluid Flow Simulation Module* and the *Insolation and Shading Prediction Module*; namely, a configuration leakage distribution file, a pressure coefficients file and a site obstructions file. Note that some of the optional zone files can also be created directly from the utility modules - for example the *View Factor Prediction Module* can create a zone view factor file. This is a powerful feature of ESP-r.

There are other files active in the system. These include the primitives and composite construction databases, the event profiles database, the plant components database, the windows database and the climate database. In addition: the Simulator will produce two databases, for building- and plant-side, for transmission to the *Results Analyser*; the *Simulator* can also produce a fluid flow results file for analysis and archival purposes; and many of the modules can produce detailed computation trace files for fault finding and highly focused appraisals. Figure 2.1 summarises these possibilities and indicates the file types involved.

The next section of the documentation set outlines a strategy for effective use of these modules. Interactive operation, by means of hierarchical menu drivers or function button protocols, is also explained and advice is given on managing the file structures which

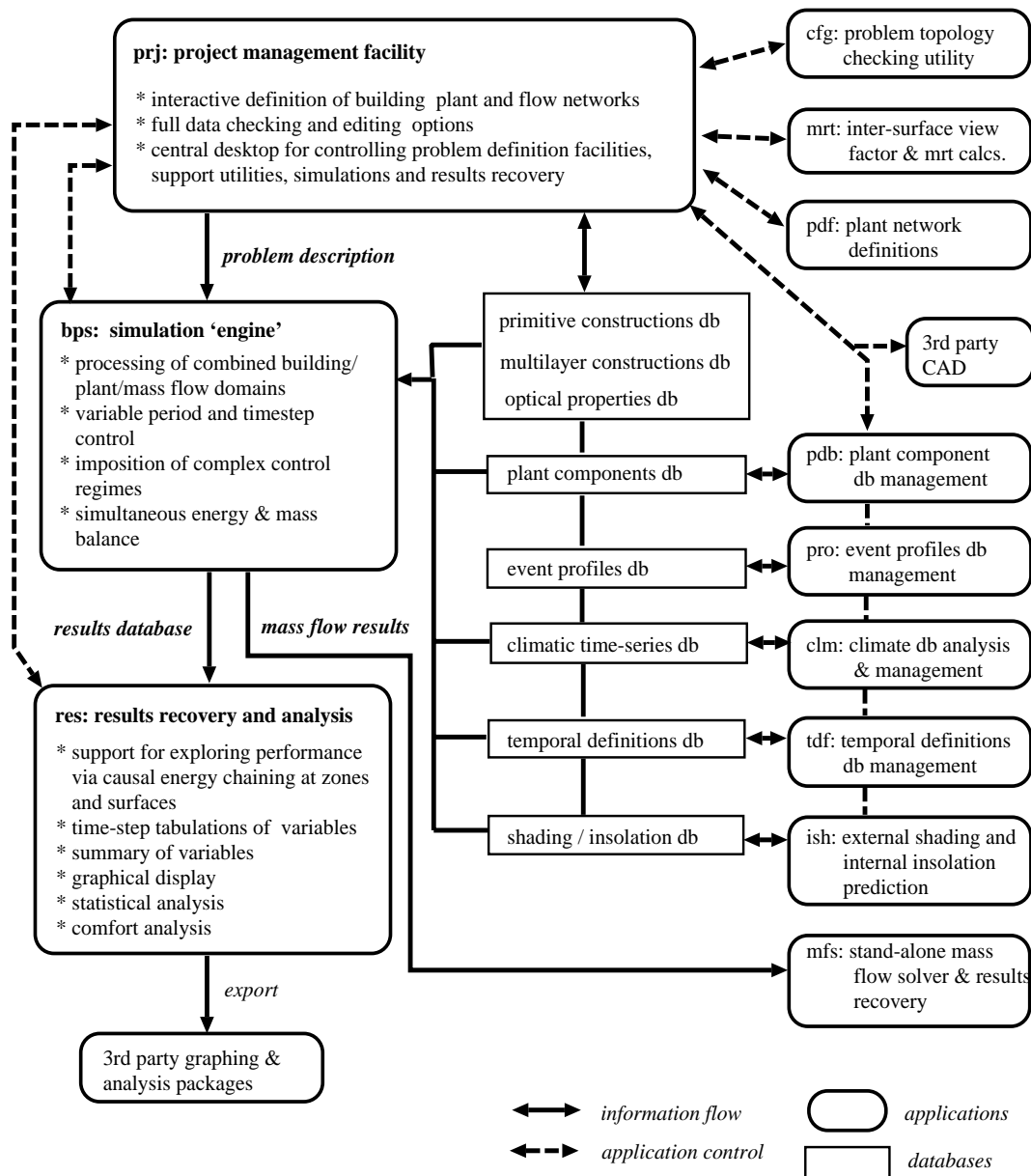


Figure 2.1 Relationship between the ESP-r application modules and databases.

result from the data preparation and simulation activities.

## 2.1 Simulation strategy

The following step-by-step procedure should be closely followed by a novice. On the other hand, an experienced user may prefer an alternative strategy which bypasses some steps or changes their order.

1. Analyse the design problem in hand and decide on the performance features to be appraised by ESP-r. Perhaps zone comfort levels are to be determined, the consequences of alternative design options assessed, or an optimum control regime formulated. This is an important task since it will influence the time and expense



incurred thereafter.

2. Now decide on the minimum number of building zones and plant components which will yield the performance measures required. For example, a one zone building model will allow an appraisal of summer overheating in the absence of cooling and against any number of design hypotheses. The same model, combined with a six plant component air conditioning plant (a mixing box, humidifier, fan, cooler, heater and supply duct, say), will allow a study of plant energy consumption against several control options. Avoid, in the first instance, any attempt to simulate large, complex building/plant systems. It is, of course, possible to undertake such an exercise, but only at the expense of time (data preparation) and cost (simulation). Very often good design insight can be obtained from simulations directed at portions of the overall system. It is important not to be merely led by the system but to give careful thought to the problem composition. Perhaps small multi-zone building problems, with specified zone conditions maintained, can be used to study several building design options. Then, at some later stage, a plant systems can be progressively added. In ESP-r terminology, the final system for simulation, irrespective of size or composition, is termed the *system configuration*.
3. A computer model of the system configuration must now be created via the Project Manager. The underlying procedure is as follows. Firstly, each building zone in the configuration is described in terms of its *geometry*, *construction* and *operation*. This results in the creation of three mandatory disk files per zone. An optional zone *utilities* file is then created for each zone. This contains a number of flags which dictate whether or not additional zone information will be made available to the Simulator, and if so, then the name of the file containing the relevant data. If the utilities file does not exist for any zone, then no further zone data is given. At this stage, a unique file set (of 3 or 4 files) will exist for each zone to be considered. A *system configuration* file is then built. This contains a reference to these zone files, information defining zone interaction, and a description of the plant network (if one exists) in terms of individual components, their inter-connections and building associations. At the appropriate point, any of the constructions databases, the event profiles database, the plant components database or the windows database can be accessed and an item contained therein extracted to define a zone property or plant component. If this facility is used, it may be necessary, prior to entering the Project Manager, to make ready one or more databases by invoking the corresponding management program.

The designer is simply required to answer a series of questions concerning the system configuration. Control of this interactive dialogue, along with validity checking and automatic disk file building, is the principal function of the Project Manager.

4. At this stage, but only if implied by the flags of the *utilities* file if one exists, it is necessary to supply further zone data to the Project Manager. This will result in the creation of one or more additional zone disk files as follows.

An *air flow* file containing time-series infiltration and zone-coupled air flow for use during a simulation. If present, these air flows supersede the design air change profiles specified in the corresponding zone operation file. Note that if a building

leakage description is active (see later) then calculated flows will supersede both design air change profiles and time-series air flow data.

A *casual gains* file containing time-series heat gains for use during a simulation. Again, if specified, the casual gains will supersede any casual gain profiles defined in the corresponding zone operation file.

A *casual gains control* file containing information on scheduling of casual gains in order to simulate, for example, various switching strategies for artificial lighting based on the availability of daylight.

A *view factor* file containing inter-surface view factors for use in a simulation to improve longwave radiation calculations.

A *shading/insolation* file containing time-series data on external surface shading and/or internal surface insolation.

A *window blind/shutter control* file containing information which governs the time dependent operation of window coverings.

A *convection coefficients* file allowing the specification of zone surface convection values to supersede those values which are computed at simulation time on the basis of natural convection considerations.

A *transparent multi-layered constructions* file allowing elected zone multi-layered constructions to be declared transparent.

A *flow domain* file specifying a 1-, 2- or 3-D grid and related parameters in support of a CFD simulation.

Each of these optional zone files can be created by terminal input directed by the Project Manager.

The time taken to reach this stage can vary greatly. An experienced user will require about 20 minutes per mandatory zone file set if the required data is readily available. On the other hand a beginner can take substantially longer. The only rule is to omit complexity in cases where its inclusion cannot significantly influence the performance aspect to be tested. For example, the omission of wall vapour barriers will have little effect on summer cooling loads but will completely alter winter interstitial condensation profiles.

5. A plant network can now be defined, component-by-component, and connected to the established building model. It is normal practice to bypass this step at an early design stage. Instead ideal control statements are associated with each zone to allow a study of the effects of the various design parameters. At some later time the plant is added to allow a study of the control issues. Of course, if the relationship between the building-side design issues and the plant characteristics are strong, and the plant details are known, then a combined building/plant study can be undertaken from the outset.
6. Simulations can now be commissioned from within the Project Manager against the assumption that the configuration is not subjected to control (a free-floating simulation). However, in most cases, some control will be required. From the Project Manager the control regime can be specified in terms of sensors, actuators and control laws. The control specification is stored in the *configuration control* file which is then invoked from the Simulator. This configuration control file, together

with the system configuration file (which references the basic zone files and the active plant components), and a climate file are the only files required by the Simulator to completely describe the problem for simulation processing.

7. If air flow within the building configuration is to be simulated by the Simulator in tandem with the energy simulation (and perhaps a zone CFD simulation), it is necessary to define the distributed building leakage and to ensure that the required pressure coefficient sets are located in a related database. Both operations are directed by the Project Manager, resulting in two further disk files: the *fluid flow network* and *pressure coefficients* files. The names of these files are given to the Simulator at the time of configuration file creation. The Simulator will now assess the pressure and temperature driven air flows for the defined zones and disregard any air change profiles (located in the corresponding zone operations file) or active zone air flow file.

8. From within the Project Manager it is possible to check configuration geometry by computing area and volume quantities or by generating perspective displays. At this stage, it is possible to create a description of surrounding site obstructions to define the objects which will cause target zone shading.

Throughout the entire data preparation process, the Project Manager offers editing and listing operations so that mistakes can be easily rectified and hard copy records can be kept.

9. The climate analysis module can now be used to analyse the climatic collections held on disk in the format required by ESP-r. By this mechanism, one collection is selected, and typical sequences identified, to provide boundary conditions which best stress the performance attribute to be tested.
10. Simulations are now performed from within the Project Manager against one or more *system configuration* and *configuration control* files. Changing either of these files, or the climate file, allows different design options and control regimes to be tested under different weather influences.
11. All results recovery and analysis is then undertaken with the help of the Results Analyser (invocable from within the Project Manager), with the principal objective of understanding the cause and effect relationships implied by the energy flowpath magnitudes and directions.
12. Appropriate design modification can now be implemented via the Project Manager by editing a mandatory or optional zone file, the system configuration file or the configuration control file. In this way constructions can be changed, operational schemes modified, plant layout re-configured, shading devices added or removed, and so on.

## 2.2 General outline of program operation

A session with ESP-r might adhere to the following sequence.

- Log on to the computer offering ESP-r.
- Start ESP-r by issuing the command *esp-r*. This will start ESP-r in its default graphics mode. You can specify an alternative mode from the following list:  
     *esp-r -mode text*     (text only mode with no pauses)

`esp-r -mode page` (text mode with pauses)  
`esp-r -mode script` (text mode for use in Shell (script) mode)  
`esp-r -mode graphic` (default)

It is also possible to start up ESP-r directly with a configuration file. For example `esp-r -file xxx.cfg` will start ESP-r with the problem specified in the system configuration file `xxx.cfg` already loaded into the Project Manager.

The start-up window size can also be controlled: type `esp-r -help` for the required syntax.

- Select commands as required from the menus displayed and thereby pick a path through the program.
- Answer the questions posed at each interaction.
- Eventually terminate the program by returning to the main menu and selecting the *Exit* command.
- Delete any unwanted files; for example, zone files no longer required or results files (usually large) which have been fully analysed.
- Log off after checking that any disk quotas have not been exceeded.

All program menus are hierarchical so that each menu pick will result in a particular processing option (with control returning to the same menu level), or will lead to a lower level command menu. In graphics mode, menu picks are initiated by the left mouse button. In text mode selection is by an identifier.

To questions requiring a yes/no response a user may type 1, Y, y, YES or yes and 0, N, n, NO or no. Also, after some output sequences, the program will pause to allow examination of the displayed page. The pause state is indicated by a **more** button at the bottom screen position. To continue click the left mouse button over the "more" button.

### 2.3 Data file management

In addition to the database structures essential to ESP-r's operation (containing primitive and composite constructions, event profiles, plant components and climatic collections), the following file types may be produced in a typical session.

- A mandatory *geometry, construction* and *operation* file for each zone.
- An optional *utilities, air flow, casual gains, blind/shutter control, shading/insulation, view factor, surface convection* and *transparent multi-layered construction* file for some or all zones.
- A mandatory *system configuration* file and, perhaps, a *configuration control* file.
- Optionally, a *fluid flow network description* file (i.e. a leakage distribution file in the case of a building air flow network), a *pressure coefficients* file and a *fluid flow results* file (i.e. air flow results in the case of an air-only flows problem).
- One or more *simulation results* files.

File Type	Extension
Geometry	.geo
Construction	.con
Operations	.opr
Shading/Insolation	.shd
View Factors	.vwf
Air Flows	.air
Convection Coefficients	.hcf
Site Obstructions	.obs
System Configuration	.cfg
System Control	.ctl
Mass Flow Network	.mfn
Utilities	.utl
Transparent Constructions	.tmc
Casual Gains Control	.cgc

Table 2.1 Filename convention

Effective file management can only follow from a file naming convention (largely automated by the Project Manager) in which the name itself yields information about the project and file type. In ESP-r the file type is reflected in the filename extension as indicated in Table 2.1.

**Remember to avoid unnecessary complexity by keeping the system configuration as simple as allowed by the design issue being studied.**

# **Section Three**

## **Exercises**

### **Contents**

- 3.0 Introduction
- 3.1 List of exercises

### 3.0 Introduction

There are a number of simulation tools available for energy efficient building design, ranging from simplified tools to detailed simulation programs. Several of these are described on Web pages that can be found via the Web address given later in this section. To learn the capability of such design tools, it is useful to study:

- a) the types of analysis questions that they can address and the benefits of using energy and environmental simulation;
- b) how to use the tools; and
- c) the underlying theory upon which the numerical processing and analysis functions of the tools are based.

The exercises and assignments described in this section are concerned with how to use one particular detailed simulation program, ESP-r, but those following the course are encouraged to also refer to related Web-based material.

In order to be able to use ESP-r and to appreciate the following sections, it is assumed that you have access to a Unix workstation (you will need a personal user account on the machine) and that you have a number of basic computer skills. A number of exercises have been designed to progress ESP-r users from the category of novice to specialist over a period of time which will depend on the individual's aptitude and stamina. Once a level of proficiency has been attained, the exercises of section 4 can be attempted.

With the exercises are ten assignments which gradually increase in difficulty. It is suggested that the course participant follows the exercises and assignments in the order given. The assignments serve a dual purpose. They enable the instructor to assess whether or not the training material is being absorbed effectively. For the course participant they form a series of "real world" consultancy sub-tasks enabling the participant to check whether the training material is understood, while at the same time placing ESP-r in a realistic context. Each assignment has an associated prerequisite exercise, such as learning email in the case of assignment 1. The outcome of each assignment should be sent by electronic mail to the supervisor.

The exercises and assignments can be accessed by a Web browser, and it is suggested that they are constantly displayed in one window as the course participant progresses through the course.

The relevant Web address is:

<http://www.strath.ac.uk/Departments/ESRU/>

The course participant should follow links from this high level page to ESP-r training courses and from there to the structured exercises.

### **3.1 List of Exercises**

#### Foundation level exercises

- 1 Getting started on the workstation
- 2 Configuring the workstation for ESP-r use
- 3 Overview of ESP-r
- 4 Exploring the in-built training exemplars
- 5 Defining a problem to ESP-r - the basics
- 6 Simulation - the basics
- 7 Results analysis - the basics
- 8 Problem definition - databases
- 9 Problem definition - geometry
- 10 Problem definition - constructions
- 11 Problem description - operations
- 12 Problem definition - inter-zone connections
- 13 Climate data and its analysis
- 14 Control capabilities
- 15 Simulation - advanced facilities
- 16 Results analysis - additional facilities
- 17 Review of files and program modules
- 18 Review of progress

#### Intermediate level exercises

- 19 Shading and insolation analysis
- 20 Fluid flow analysis
- 21 Plant and control modelling
- 22 Lighting analysis
- 23 Other ESP-r facilities
- 24 Upcoming features

#### Expert level exercises

- 25 Making Models: CAD and Attribution
- 26 Making Models: Fluid Flow, Plant and Control Networks
- 27 Making Models: Enhanced Resolution
- 28 Integrated Performance Appraisal
- 29 Edit/ compile/ link test cycle



# **Section Four**

## **Example applications of the ESP-r system**

### **Contents**

- 4.0 Introduction
- 4.1 Parametric studies
- 4.2 Upgrading strategy
- 4.3 The issue of cost
- 4.4 Inovatory design
- 4.5 Low energy housing
- 4.6 Re-design
- 4.7 Critical control
- 4.8 Feasibility study
- 4.9 Late design-stage use
- 4.10 Comfort
- 4.11 Speculative development
- 4.12 Training exemplars
  - 4.12.1 Single office
  - 4.12.2 Simple building
  - 4.12.3 Small house
  - 4.12.4 Large house
  - 4.12.5 Test cells
  - 4.12.6 Special focus
  - 4.12.7 Office block
  - 4.12.8 Plant

## 4.0 Introduction

Sections 4.1 through 4.11 presents a number of short case studies of typical and atypical designs as analysed by ESP-r. They have been selected to indicate the possibilities for performance assessment by simulation. The remaining sections describe a number of simulation exercises based on exemplars supplied with the system. These have a dual role: to test the ESP-r program modules on first implementation and to provide training for new users thereafter. The exercises progress from the simple to the more complex and have been designed to test several aspects of ESP-r. Each of the training sessions deals with a basic problem type with variations which explore simulation topics.

Throughout the exercises reference is made to standard ESP-r databases and test files. As explained elsewhere, such files are held in a strict directory structure. In the text that follows the Unix syntax is used so that `~esru/esp-r/climate` means sub-directory climate of sub-directory esp-r of the home directory (wherever defined) of esru. Similarly `~esru/esp-r/training/office` means sub-directory office of sub-directory training of sub\_directory esp-r of the home directory of esru.

### 4.1 Parametric studies

Parametric analysis of building energy performance is, perhaps, the prerequisite of a more complete understanding of the issues relating to energy efficient building design. The process of simulation can be used to increase the corpus of knowledge upon which future designs can be built. ESP-r has been used as the simulation tool in a number of parametric studies.

In one, different window designs were analysed in terms of their performance in British and Scandinavian climates. Annual simulations were performed for a number of combinations of facade orientation, window size, window type and fabric capacity sampled from the many combinatorial possibilities. Typical occupancy patterns, internal gains and window curtain operation was assumed throughout. The different windows were then analysed in terms of the cost-benefit associated with the provision of varying comfort standards.

In another study, the model was used to generate design guidelines in public buildings by systematically varying the major design parameters such as insulation, capacity, window size, heating system regulation and degree of air permeability.

### 4.2 Upgrading strategy

Many Government agencies in the UK own housing stock which dates from the early 1950's. In recent times much of this stock has fallen due for upgrading. Obviously some mechanism must be employed to establish the most productive strategy. ESP-r has been used as such a mechanism.

A sample of houses in any estate are analysed, firstly in their original form, and subsequently with a range of alternative upgrading features formulated on the basis of the initial simulation results. In one case, the prime heat loss path was identified by ESP-r as being through the suspended timber floor. This occurred in a building for which substantial wall insulation was planned. As a result the upgrading proposal was modified and the client's investment put to better use.

### 4.3 The issue of cost

ESP-r was once used by a large regional council to investigate the possibilities in a proposed building conversion. The study involved an in-depth investigation into heating demand diversity as affected by alternative zoning strategies, plant control schedules and fabric treatments. Their resulting report included the technical details of the project but went on to raise the following general points.

- The total cost incurred by them in the simulation exercise was calculated at half the cost incurred in a parallel exercise which involved only the calculation of zone heat loss by conventional 'manual' methods.
- The results from the ESP-r exercise allowed a more detailed analysis of both the building and plant performance than would have been possible by other means. In particular, the ability to interactively impose design changes was considered to be extremely useful.
- The graphical presentation of results was considered invaluable as a means of conveying information to the design team.

### 4.4 Inovatory design

ESP-r has also been used to test inovatory design solutions. In one application, the program was used to model a proposed solar wall construction which formed part of a multi-million pound laboratory complex.

The movement of large quantities of air had suggested a design solution in which this air was passed over the entire south-facing building facade and contained within an outer glass skin. ESP-r was used to simulate this solar wall to predict the potential annual pick-up of solar energy and the corresponding reduction of the south facade heat loss due to the insulating effect of the additional glass and air space combination.

Modelling of the system was complicated by the proposed inclusion of ducts within the air space which caused wall shading as well as convective heat pick-up. What was required was a first principle computation method capable of modelling the complexities of the system.

### 4.5 Low energy housing

In conjunction with a private architectural practice ESP-r was used by the modelling team to develop a specification for a low energy house. Primary objectives were to select a building mass and insulation scheme which, in conjunction with the selected window configuration, would effectively minimise the heating demand. Using real climatic data, initial simulations resulted in decisions on orientation, shape, zoning, window size and window type. Later simulations - assuming real occupancy and plant operational patterns - aided decisions on fabric weight, position of thermal capacity, position of insulation, and effective solar screening to avoid overheating during peak solar times. Issues relating to controlled ventilation and heat distribution between different zones were also examined.

The final scheme was then rigorously analysed over whole year periods and, in this way, efficient energy performance was established.

#### 4.6 Re-design

ESP-r was used to investigate re-design issues in converting a large dockland complex to house departments of a polytechnic. The exercise involved an analysis of the relationship between the existing massive construction and the potential overheating resulting from solar penetration and the introduction of high internal loads. The possible set of conversion solutions were constrained by the existence of a preservation order prohibiting substantive changes to the building facade. The restriction on facade shading devices focused attention on the cost-benefit associated with various glazing types in terms of their ability to minimise solar penetration. ESP-r was used to find a suitable economic solution.

#### 4.7 Critical control

In another new design application ESP-r was used by a central government agency to analyse critical environmental conditions in an astronomical laboratory where control of the thermal environment is crucial to the effective working of the telemetry equipment.

ESP-r was used to select a constructional scheme which would ensure that internal, untreated conditions would remain within  $\pm 0.1^{\circ}\text{C}$  of the required condition. The proposed massive concrete construction had a large thermal time constant which had rendered simple predictive techniques unsuitable.

#### 4.8 Feasibility study

A large practice was asked to carry out a feasibility study and produce a development scheme for the comprehensive redevelopment of a narrow but important urban site; the redevelopment had to include two office blocks, each of 100,000  $\text{ft}^2$ , to be let by the client. The narrowness of the site suggested a narrow floor plan in each office block, one rising to six stories, the other to eight stories. The proposal that one of the blocks should be air conditioned, the other not, suggested to the architect an investigation of a broad range of construction types under 'artificial', 'ambient', and 'assisted', environmental control.

In the event, a two-stage ESP-r analysis was carried out in the context of the non-air conditioned building. In the first stage, office modules on the SW and NE orientations were simulated, respectively, under summer and winter conditions; within a fixed external envelope with 35% glazing. ESP-r was used to explore the implications of achieving shading on the SW facade, increasing the thermal mass of internal partitioning, altering the rate of mechanical ventilation and double-glazing the NE facade. In the second stage, more explicit proposals were generated for the pattern of external glazing, the internal sub-division of space, etc; and a similar series of investigations, using ESP-r, carried out.

#### 4.9 Late design-stage use

The design of a building to house a computer and ancillary activities for a nationalised industry was already well advanced when then the opportunity arose to use ESP-r. The air conditioned building, of approximately 6000  $\text{m}^2$ , was to be built on four floors, each 30m wide by 50m long; office accommodation would be housed on the perimeter with rooms of more occasional occupancy in the core.

The stimulus for use of a dynamic energy model came from the late decision to alter the building envelope from a lightweight metal cladding system to brickwork, with an associated increase in glazing from 25% to 40%, differentially arranged in the four floors. The effect of these changes on the variable air volume (VAV) distribution ductwork and on the central air-handling plant needed, as a matter of urgency, to be determined.

The ESP-r analysis was applied to spatial modules sited on all four corners of the building and halfway along each facade. For each module, on each floor, the peak load across the VAV terminals was computed and the accumulative effect on the central plant estimated. In relation to the climate data used the peak load on all space modules was seen to occur on a high air temperature July day and not, as had been previously assumed, within the month of September when solar angles are lower. The ability of ESP-r to model the dynamics of thermal behaviour, hour by hour, showed clearly that the peak load occurred in different space modules at different times throughout the critical day; as a consequence, although individual VAV terminal duties had to be increased, no significant increase in load would be experienced by the central plant.

#### **4.10 Comfort**

The first phase of an extension to a University Library comprised a reading room with a floor of bookstacks above. The construction proposed by the architect was dense reinforced concrete with double skin patent glazing angled back from sill to ceiling.

Concern for the environmental conditions focused on the maximum occupancy period of the reading room (May with an estimated 350 readers) and on the mid-summer period (June to August, with an estimated 100 readers); the architect also wished an appraisal of the scheme under winter heating conditions.

Climatic data relevant to the study period were created in accordance with the diurnal range known to prevail at the location of the site. The May analysis received a 24 hour heat input requirement under the proposed 10 air changes per hour ventilation regime; as a result of the analysis the proposed air change rate in the Spring was reduced to a level just sufficient to combat odours and meet ventilation requirements. With 10 air changes per hour in August, the maximum temperature was predicted to be 24°C. Given the slightly lower predicted resultant temperature and the possibility of the 100 readers disposing themselves away from the external wall this was considered to be acceptable. A January analysis of heat flow through the double-glazed envelope revealed acceptable comfort conditions.

#### **4.11 Speculative development**

In another exercise ESP-r was used, in the context of speculative office developments, to:

- Estimate the relative influence on energy conservation of different external wall constructions and window treatments.
- Compare the generated 'best-buy' solution with other existing schemes.
- Ascertain the impact of such an approach to capital expenditure (the developer's contribution) and running costs (the tenant's contribution).

The analysis indicated that:

- Changes to the fabric alone can result in a +16% or a -24% alteration to the winter heating load relative to the standard.
- Double glazing had a similar effect to that of adding a suspended ceiling, namely a 23% saving of winter energy.
- Substituting internal fabric blinds for external blinds in winter saves about 12% which is comparable to the thermal benefit of retaining full light output.
- There is no apparent advantage in reducing still further the construction U-value.
- Peak cooling demands do not show an exactly negative correlation with peak heating load levels, suggesting that a balance in the fabric/services system between winter and summer conditions may be achievable.

From the study, the architect was able to provide a base of relevant data and conclude generally that, 'if a developer seeks to offer a good level of environment, it may be advantageous to the tenant in terms of running costs to do so by means of design changes to the building rather than by introducing air conditioning'.

## 4.12 Training Exemplars

The ESP-r system offers a model archiving and browsing facility by which past problems can be maintained and revisited. On delivery, this facility is used to provide a number of exemplar problems which are useful for training support. The following sections relate to some of these on-line exemplar models.

### 4.12.1 Single office

Figure 4.1.1 gives the geometry, construction and operation details for a single building zone containing office and computing equipment. The user would begin by creating a directory for this problem and moving into it and running ESP-r which contains or allows access to the facilities required to describe the problem, commission simulations and engage in analysis of the results.

The opening display provides a tutorial, database management facility, problem definition, problem simulation and analysis and various support facilities. If the user is a novice it is recommended that some time be spent using the tutorial facility.

When testing ESP-r it is not necessary to create the problem description files since they are supplied. In directory `~esru/esp-r/training/simple`, the files `cfg/bld_simple.cfg`, `zones/reception.geo`, `zones/reception.con`, `zones/reception.opr` and `ctl/bld_simple.ctl` correspond to the system configuration, zone geometry, zone construction, zone operation and configuration control files respectively. All that is required is to select *problem definition* and supply the problem name `bld_simple.cfg` which will then be loaded. At this point the user may explore the details of the problem or commission a simulation. Notes supplied with the problem should be read by selecting *problem registration:documentation* from within the *problem definition*, accepting the file `bld_simple.log` and then reading the text displayed in the text feedback area.

Of course it is also possible to describe this problem from scratch yourself. Although the user may approach this task of in a number of ways, the following sequence is suggested.

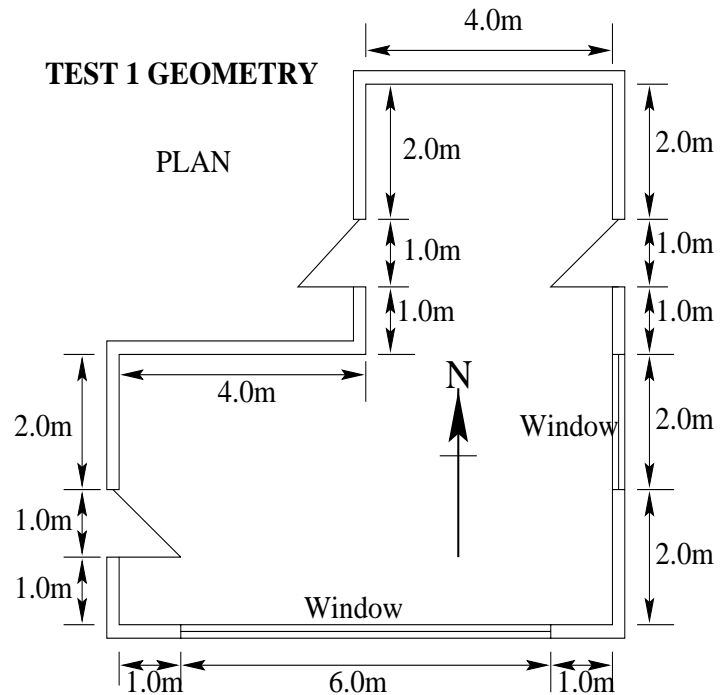
The first task is to select *database management* which allows various databases to be associated with a project. In most cases the defaults provided for climate, pressure distribution, primitive constructions, event profiles, plant components and optical properties will not need to be changed. Indeed some may not be used, but a multi-layered constructions database will need to be defined for the current problem. This database defines the details of wall floor and ceiling constructions - i.e. order, thickness and references to elements in the construction primitives database. To create a new multi-layered constructions database simply supply a new file name and a fresh database with a dummy construction will be created.

For each of the constructions shown in Figure 4.1.1 follow the editing procedures - beginning with the outside face and working in to the layer which faces the zone. You may edit, add or delete an individual layer as necessary. In the case of the double glazing it is necessary to match the properties of the optical database and the best way to do this is to specify the optical properties first and then allow a matching set of layers to be created. It is a good idea to *update* the database frequently. When you have finished the details should be as in Figure 4.1.2. Note that you can also use any text editor to change this file (test.mlc).

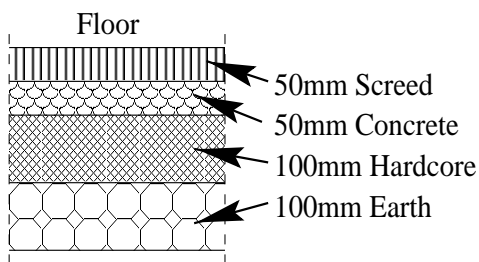
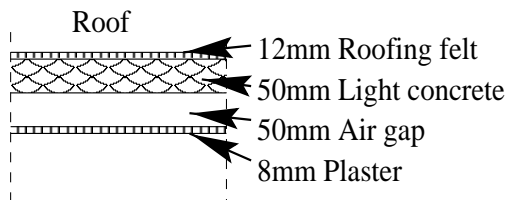
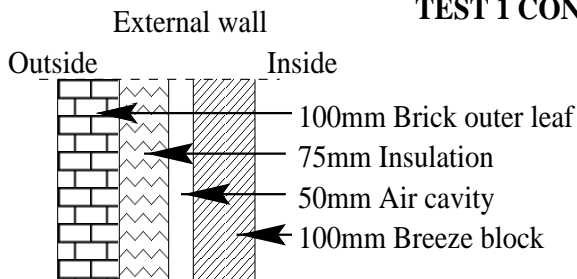
### TEST 1 PROJECT DETAILS

1. A single zone isolated building with no adjacent objects. No shading analysis required.
2. Air change rate 0.3 ac/h infiltration only.
3. Occupancy - 6 people (90W sensible, 50W latent per person). Radiative/convective split 0.2/0.8. Monday-Friday inclusive 09:00-17:00. Weekends no occupancy.
4. Lighting - 10W/m<sup>2</sup> office hours only. Rad/conv split 0.1/0 (special light fittings)
5. Others - 450W from machines during office hours. Rad/conv split 0.2/0.8. 800W from machines, 24 hours/day, 7days/week.
6. Location - Latitude 51.7deg, Longitude -0.5 deg from meridian.

### TEST 1 GEOMETRY



### TEST 1 CONSTRUCTION



#### Construction notes:

1. Air gap resistance: 0.17 (m<sup>2</sup>K)/W.
2. All doors are 25mm thick wood (oak).
3. Double glazed windows (6mm panes, 12mm air gap).
4. Optical properties from standard database.

Figure 4.1.1 Details of the *test1* building



```

# composite construction db defined in test.mlc
# based on primitive construction db /usr/esru/esp-r/defaults/defpcdb
  6  # no of composites
# layers description optics
  3  d_glz    TRAN DCF7671_06nb
# db ref thick db name & air gap R
 242  0.006 Plate
   0  0.012 air 0.170 0.170 0.170
 242  0.006 Plate
# layers description optics
  4  extern_wall OPAQ OPAQUE
# db ref thick db name & air gap R
  4  0.100 Outer leaf
 211  0.075 Glasswool
   0  0.050 air 0.170 0.170 0.170
  2  0.100 Breeze block
# layers description optics
  4  roof_1    OPAQ OPAQUE
# db ref thick db name & air gap R
 162  0.012 Roofing felt
  21  0.050 Light mix
   0  0.050 air 0.170 0.170 0.170
 151  0.008 Ceiling (plaster)
# layers description optics
  4  floor_1   OPAQ OPAQUE
# db ref thick db name & air gap R
 263  0.100 Common
  82  0.100 Red granite
  32  0.050 Heavy mix
 124  0.050 Cement screed
# layers description optics
  2  intern_wall OPAQ OPAQUE
# db ref thick db name & air gap R
  2  0.150 Breeze block
 103  0.012 Perlite plasterboard
# layers description optics
  1  door      OPAQ OPAQUE
# db ref thick db name & air gap R
  69  0.025 Oak (radial)

```

Figure 4.1.2 Multi-layer construction database for *test1*

Exit from the database facility and select *problem definition* and, after reading the message, supply the new problem name *bld\_simple.cfg*, indicate that you wish to begin with a new geometry from scratch and supply a name for the zone (this name is for reporting and display purposes and is not the file name).

The zone is most easily described as an extruded shape and after you have supplied the floor and ceiling height as well as the coordinates of the various corners and the connections between these corners,

you will be presented with a display similar to that in Figure 4.1.3. Use the *geometry-->surface attributes* option from the *problem definition* menu to adapt the (zone)geometry of the problem.

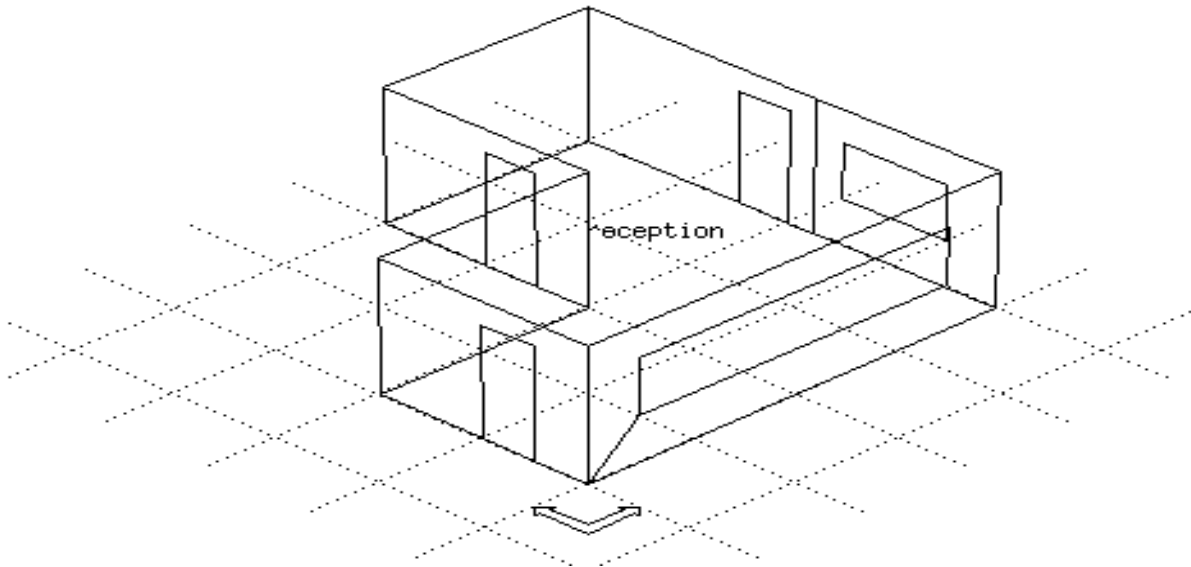


Figure 4.1.3 geometry of bld\_simple.cfg.

Note that the surfaces have been given default names. Clarity of presentation is enhanced by replacing the default surface names with names which make sense in the context of a given building. Use the *surface attribute* selection to accomplish this.

There are two representations of glazing which can be used - the first is a simplified representation with optical properties and a "U" value. The other is to consider glazing as a transparent multi-layered construction which is defined in the composite database. Default windows (first option) are defined via the *surface attribute* selection. You will be asked to supply the offset from the lower left corner of the surface to the lower left corner of the glazing as well as its width and height. After defining a default window, you can transform its geometry into a multi-layered construction. Although we recommend to use multi-layered glazing constructions, you will try one of each in this test case.

From the *geometry* menu some other subjects like *solar insolation distribution*, *obstruction blocks* and *rotation & transforms* can be selected. These options are not relevant to the test case you are working on at this moment; later on, when you have seen some results of this first test, some shading distributions will be added.

At this point the zone will contain information similar to that in Figure 4.1.4.

```
# geometry of reception defined in:
# reception.geo
# type zone name
```

## GEN reception

# vertices, surfaces, rotation angle

30, 13, 0.000

# X co-ord, Y co-ord, Z co-ord

1.000	1.000	0.000	# vert 1
9.000	1.000	0.000	# vert 2
9.000	4.500	0.000	# vert 3
9.000	9.000	0.000	# vert 4
5.000	9.000	0.000	# vert 5
5.000	5.000	0.000	# vert 6
1.000	5.000	0.000	# vert 7
1.000	1.000	3.000	# vert 8
9.000	1.000	3.000	# vert 9
9.000	4.500	3.000	# vert 10
9.000	9.000	3.000	# vert 11
5.000	9.000	3.000	# vert 12
5.000	5.000	3.000	# vert 13
1.000	5.000	3.000	# vert 14
2.000	1.000	1.000	# vert 15
8.000	1.000	1.000	# vert 16
8.000	1.000	2.250	# vert 17
2.000	1.000	2.250	# vert 18
9.000	5.000	0.000	# vert 19
9.000	6.000	0.000	# vert 20
9.000	6.000	2.500	# vert 21
9.000	5.000	2.500	# vert 22
5.000	7.000	0.000	# vert 23
5.000	6.000	0.000	# vert 24
5.000	6.000	2.500	# vert 25
5.000	7.000	2.500	# vert 26
1.000	3.000	0.000	# vert 27
1.000	2.000	0.000	# vert 28
1.000	2.000	2.500	# vert 29
1.000	3.000	2.500	# vert 30

# no of vertices followed by list of associated vert

10, 1, 2, 9, 8, 1, 15, 18, 17, 16, 15,  
 4, 2, 3, 10, 9,  
 8, 3, 19, 22, 21, 20, 4, 11, 10,  
 4, 4, 5, 12, 11,  
 8, 5, 23, 26, 25, 24, 6, 13, 12,  
 4, 6, 7, 14, 13,  
 8, 7, 27, 30, 29, 28, 1, 8, 14,  
 7, 8, 9, 10, 11, 12, 13, 14,  
 13, 1, 28, 27, 7, 6, 24, 23, 5, 4, 20, 19, 3, 2,  
 4, 15, 16, 17, 18,

```

4, 19, 20, 21, 22,
4, 23, 24, 25, 26,
4, 27, 28, 29, 30,
# number of default windows within each surface
0, 1, 0, 0, 0, 0, 0, 0, 0, 0, 0, 0, 0,
# window X offset, Z offset, width, height, optical id
1.000 1.000 2.000 1.250 DCF7671_06nb # in east
# default internal insolation distribution
3, 0, 0, 0
# surface attributes follow:
# id surface geom loc/ mlc db environment
# no name type posn name other side
1, south OPAQ VERT extern_wall EXTERIOR
2, east OPAQ VERT extern_wall EXTERIOR
3, passage OPAQ VERT intern_wall SIMILAR
4, north OPAQ VERT extern_wall EXTERIOR
5, part_a OPAQ VERT extern_wall EXTERIOR
6, part_b OPAQ VERT extern_wall EXTERIOR
7, west OPAQ VERT extern_wall EXTERIOR
8, ceiling OPAQ CEIL roof_1 EXTERIOR
9, floor OPAQ FLOR floor_1 CONSTANT
10, glz_s TRAN VERT d_glz EXTERIOR
11, door_p OPAQ VERT door EXTERIOR
12, door_a OPAQ VERT door EXTERIOR
13, door_w OPAQ VERT door EXTERIOR

```

Figure 4.1.4 Zone geometry file.

The next descriptive task is to define the thermophysical properties of the zone. The recommended procedure is to use the *surface attribute* facility and for each surface select the appropriate construction. In the case of the glazing in the south wall make sure that it is marked as transparent. Having defined these attributes proceed to use the *construction browse/edit* facility to create a zone construction file. Since there is a transparent wall in the zone a zone utility file and zone TMC file are required. ESP-r knows about the file structure dependencies and will automatically generate these files. After reading in the geometry (including the surface attributes) ESP-r will attempt to create the necessary files. During the creation process it will ask you to confirm that glz\_s is transparent, otherwise the process is automatic. You may browse through any of the surfaces thermophysical properties and unless a change is demanded the data can be merged into the problem. The thermophysical properties are contained in *reception.con* which is listed below in Figure 4.1.5.

```

# thermophysical properties of reception defined in reception.con
# no of |air|surface(from geo)| multilayer construction
# layers|gaps| no. name | database name
4, 1 # 1 south extern_wall

```

```

4, 1 # 2 east      extern_wall
2, 0 # 3 passage   intern_wall
4, 1 # 4 north     extern_wall
4, 1 # 5 part_a    extern_wall
4, 1 # 6 part_b    extern_wall
4, 1 # 7 west      extern_wall
4, 1 # 8 ceiling   roof_1
4, 0 # 9 floor     floor_1
3, 1 # 10 glz_s    d_glz
1, 0 # 11 door_p   door
1, 0 # 12 door_a   door
1, 0 # 13 door_w   door
3, 0.170, # air gap position & resistance for surface 1
3, 0.170, # air gap position & resistance for surface 2
3, 0.170, # air gap position & resistance for surface 4
3, 0.170, # air gap position & resistance for surface 5
3, 0.170,
3, 0.170, # air gap position & resistance for surface 6
3, 0.170, # air gap position & resistance for surface 7
3, 0.170, # air gap position & resistance for surface 8
2, 0.170, # air gap position & resistance for surface 10
# conduc- | density | specific | thick- | surf|layer
# tivity  | | heat | ness(m)| |
0.9600, 2000.0, 650.0, 0.1000 # 1 1
0.0400, 250.0, 840.0, 0.0750 # 2
0.0000, 0.0, 0.0, 0.0500 # 3
0.4400, 1500.0, 650.0, 0.1000 # 4
0.9600, 2000.0, 650.0, 0.1000 # 2 1
0.0400, 250.0, 840.0, 0.0750 # 2
0.0000, 0.0, 0.0, 0.0500 # 3
0.4400, 1500.0, 650.0, 0.1000 # 4
0.4400, 1500.0, 650.0, 0.1500 # 3 1
0.1800, 800.0, 837.0, 0.0120 # 2
0.9600, 2000.0, 650.0, 0.1000 # 4 1
0.0400, 250.0, 840.0, 0.0750 # 2
0.0000, 0.0, 0.0, 0.0500 # 3
0.4400, 1500.0, 650.0, 0.1000 # 4
0.9600, 2000.0, 650.0, 0.1000 # 5 1
0.0400, 250.0, 840.0, 0.0750 # 2
0.0000, 0.0, 0.0, 0.0500 # 3
0.4400, 1500.0, 650.0, 0.1000 # 4
0.9600, 2000.0, 650.0, 0.1000 # 6 1
0.0400, 250.0, 840.0, 0.0750 # 2
0.0000, 0.0, 0.0, 0.0500 # 3
0.4400, 1500.0, 650.0, 0.1000 # 4

```

```

0.9600, 2000.0, 650.0, 0.1000 # 7 1
0.0400, 250.0, 840.0, 0.0750 # 2
0.0000, 0.0, 0.0, 0.0500 # 3
0.4400, 1500.0, 650.0, 0.1000 # 4
0.1900, 960.0, 837.0, 0.0120 # 8 1
0.3800, 1200.0, 653.0, 0.0500 # 2
0.0000, 0.0, 0.0, 0.0500 # 3
0.3800, 1120.0, 840.0, 0.0080 # 4
1.2800, 1460.0, 879.0, 0.1000 # 9 1
2.9000, 2650.0, 900.0, 0.1000 # 2
1.4000, 2100.0, 653.0, 0.0500 # 3
1.4000, 2100.0, 650.0, 0.0500 # 4
0.7600, 2710.0, 837.0, 0.0060 # 10 1
0.0000, 0.0, 0.0, 0.0120 # 2
0.7600, 2710.0, 837.0, 0.0060 # 3
0.1900, 700.0, 2390.0, 0.0250 # 11 1
0.1900, 700.0, 2390.0, 0.0250 # 12 1
0.1900, 700.0, 2390.0, 0.0250 # 13 1
# default window details, 2 lines for each window:
# direct solar transmit (5 angles) |visible|
# |trans. |
# followed by:
# heat gain factor (5 angles) |U value|
0.611, 0.583, 0.534, 0.384, 0.170, 0.760, # surf 2 win 1
0.711, 0.690, 0.645, 0.487, 0.250, 2.800
# for each surface: inside face emissivity
0.90, 0.90, 0.91, 0.90, 0.90, 0.90, 0.90, 0.90, 0.91, 0.25, 0.90, 0.90, 0.90,
# for each surface: outside face emissivity
0.90, 0.90, 0.90, 0.90, 0.90, 0.90, 0.90, 0.90, 0.90, 0.25, 0.90, 0.90, 0.90,
# for each surface: inside face solar absorptivity
0.65, 0.65, 0.60, 0.65, 0.65, 0.65, 0.65, 0.60, 0.65, 0.05, 0.65, 0.65, 0.65,
# for each surface: outside face solar absorptivity
0.93, 0.93, 0.65, 0.93, 0.93, 0.93, 0.93, 0.90, 0.85, 0.05, 0.65, 0.65, 0.65,
# inside and exterior glazing maintenance factors
1.00 1.00

```

Figure 4.1.5 Zone construction file.

The optical properties of the transparent glazing surface are contained in *reception.tmc* which is listed below in Figure 4.1.6:

```

# transparent properties of reception defined in reception.tmc
13 # surfaces
# tmc index for each surface
0 0 0 0 0 0 0 0 0 1 0 0 0
3 # layers

```

```
# Transmission @ 5 angles & visible tr.
0.611 0.583 0.534 0.384 0.170 0.760
# For each layer absorption @ 5 angles
0.157 0.172 0.185 0.201 0.202
0.001 0.002 0.003 0.004 0.005
0.117 0.124 0.127 0.112 0.770
0 # blind/shutter control flag
```

Figure 4.1.6 Zone TMC file.

The zone utility file *reception.utl* is listed below in Figure 4.1.7.

```
# ESRU optional files for reception defined by file
# reception.utl
0 # timestep air flow
0 # timestep casual gains
0 # view factor
0 # shading/insolation db
0 # convective transfer coef
0 # blind/shutter control
1 # transparent construction
reception.tmc
0 # casual gain control
0 # obstructions
```

Figure 4.1.7 Zone utility file.

To define the infiltration, occupancy, equipment and lighting within the zone select *operations* and you will be placed into an editing environment which allows each of these to be defined. Normally you will focus on weekdays first and then toggle to Saturdays and Sundays. The operations file *reception.opr* is listed below in Figure 4.1.8

```
# operations of reception defined in:
# reception.opr
base case # operation name
# control(no flow control ), low & high setpoints
0 0.000 0.000
1 # no weekday flow periods
# wk: start, stop, infil, ventil, source, data
0, 24, 0.300 0.000 0 0.000
1 # no Saturday flow periods
# Sat: start, stop, infil, ventil, source, data
0, 24, 0.300 0.000 0 0.000
1 # no Sunday flow periods
# Sun: start, stop, infil, ventil, source, data
0, 24, 0.300 0.000 0 0.000
```

```

4 # no weekday casual gains
# wk: type, start, stop, sens, latent, rad_frac, conv_frac
3, 0, 24, 800.0, 0.0, 0.200, 0.800
3, 9, 17, 450.0, 0.0, 0.200, 0.800
2, 9, 17, 600.0, 0.0, 0.140, 0.000
1, 9, 17, 540.0, 300.0, 0.200, 0.800
1 # no Saturday casual gains
# Sat: type, start, stop, sens, latent, rad_frac, conv_frac
3, 0, 24, 800.0, 0.0, 0.200, 0.800
1 # no Sunday casual gains
# Sun: type, start, stop, sens, latent, rad_frac, conv_frac
3, 0, 24, 800.0, 0.0, 0.200, 0.800

```

Figure 4.1.8 Zone operation file.

There are several points within *ESP-r* where information related to the problem topology can be supplied. Within the *problem definition* menu there is the *connection and boundary* selection which allows one or more of the connections to be manually edited, topology to be checked and generated via a vertex matching algorithm or topology to be imported from surface attribute boundary specifications. Within the *geometry browse & edit* facility you may specify boundary conditions as surface attributes or import the connection topology to the surface attributes.

By definition, the initial assumption for the topology of a problem is that all surfaces face the outside. This can be confirmed by exiting to the *problem definition* menu and consulting the *connection and boundary* selection. As most of the walls face the outside a quick way to update the surface boundary attributes is to return to the *geometry browse & edit* and select *update topology from problem*.

Two surfaces in the zone do not face the outside and this can be defined in two ways:

- 1) supply the boundary for the other side of the 'passage' and the 'floor' as surface attributes and then exit to the *connection and boundary* and import this information or;
- 2) edit the connection in the *connection and boundary* display and then move to the *geometry browse & edit* and import the information. After updating the problem (system configuration) file *simple\_office* should look like the listing in Figure 4.1.9

```

* CONFIGURATION
# ESRU system configuration defined by file
# simple_office
1      # Building only
51.700 -0.500 # Latitude & Longitude
2 0.250 # Site exposure & ground refl
* DATABASES
*prm /usr/esru/esp-r/defaults/defpcdb
*mlc test.mlc
*opt /usr/esru/esp-r/defaults/defodb

```



```

*prs /usr/esru/esp-r/defaults/defpres
*evn /usr/esru/esp-r/defaults/defprdb
*clm /usr/esru/esp-r/defaults/defclm
* PROJ LOG
job.notes
* Building
Single zone test
  1 # no of zones
  1 # reference for Main_office
reception.opr # schedules
reception.geo # geometry
reception.con # constructions
  1
reception.utl
  13 # number of connections
  1 1 0 0 0 # 1 south in reception is External
  1 2 0 0 0 # 2 east in reception is External
  1 3 1 0 0 # 3 passage in reception >|< Identical environment
  1 4 0 0 0 # 4 north in reception is External
  1 5 0 0 0 # 5 part_a in reception is External
  1 6 0 0 0 # 6 part_b in reception is External
  1 7 0 0 0 # 7 west in reception is External
  1 8 0 0 0 # 8 ceiling in reception is External
  1 9 2 10 0 # 9 floor in reception >|< Constant @ 10 dC & 0 W rad
  1 10 0 0 0 # 10 glz_s in reception is External
  1 11 0 0 0 # 11 door_p in reception is External
  1 12 0 0 0 # 12 door_a in reception is External
  1 13 0 0 0 # 13 door_w in reception is External
  0 # no mass flow analysis

```

Figure 4.1.9 Problem definition (system configuration) file.

Now a configuration control file must be created using the *building controls & actuation* facility. This file contains the control statements to be obeyed by the *Simulator* at simulation time. This file is one of the most complex and confusing for most users of *ESP-r*. Previous releases provided only minimal editing facilities, however *ESP-r* includes a extensive editing and reporting facilities which should ease the process considerably.

To set up a an ideal control with a heating capacity of 1000W max. and 0W min., a cooling capacity of 1000W max. and 0W min. and the following temperature profile:

weekday....

0h00 - 7h00 free floating

7h00 - 9h00 15°C heating setpoint and 100°C cooling setpoint

9h00 - 17h00 20°C heating setpoint and 100°C cooling setpoint

17h00 - 24h00 free floating

Saturday....

0h00 - 24h00 free floating

Sunday....

0h00 - 24h00 free floating

A summary of the meaning of the file as well as the raw file are listed below:

Within the current project 1 control functions have been specified.  
The overall project control has been named <test 1> and the building control has been named <summer/winter>.

The sensor for function 1 measures the temperature of the current zone.

The actuator for function 1 is air point of the current zone  
The day types are Weekdays, Saturdays & Sundays

Day type 1 is valid Period: Tue 1 Jan To: Tue 31 Dec YEAR:1991  
and contains 4 control periods.

Period	Start	sensed	actuated	control law	
no	time	property	property		
1	0.00	db temp	> flux	free floating	
2	7.00	db temp	> flux	ideal control	
	data...	1000.0	0.0	1000.0	0.0 15.0 100.0
3	9.00	db temp	> flux	ideal control	
	data...	1000.0	0.0	1000.0	0.0 20.0 100.0
4	18.00	db temp	> flux	free floating	

Day type 2 is valid Period: Tue 1 Jan To: Tue 31 Dec YEAR:1991  
and contains 1 control periods.

Period	Start	sensed	actuated	control law	
no	time	property	property		
1	0.00	db temp	> flux	free floating	

Day type 3 is valid Period: Tue 1 Jan To: Tue 31 Dec YEAR:1991  
and contains 1 control periods.

Period	Start	sensed	actuated	control law	
no	time	property	property		
1	0.00	db temp	> flux	free floating	

zone 1 << control 1

office\_contr  
\* Building  
convec heating  
1  
\* Control function

```

0 0 0 0
0 0 0
0
1 365
4
0 2 0.000
0.0
0 1 7.000
6.0
1000.000 0. 1000.000 0. 15.0000 100.0000
0 1 9.000
6.0
1000.000 0. 1000.000 0. 20.0000 100.0000
0 2 18.000
0.0
1 365
1
0 2 0.000
0.0
1 365
1
0 2 0.000
0.0
1

```

Figure 4.1.10 System control information and file.

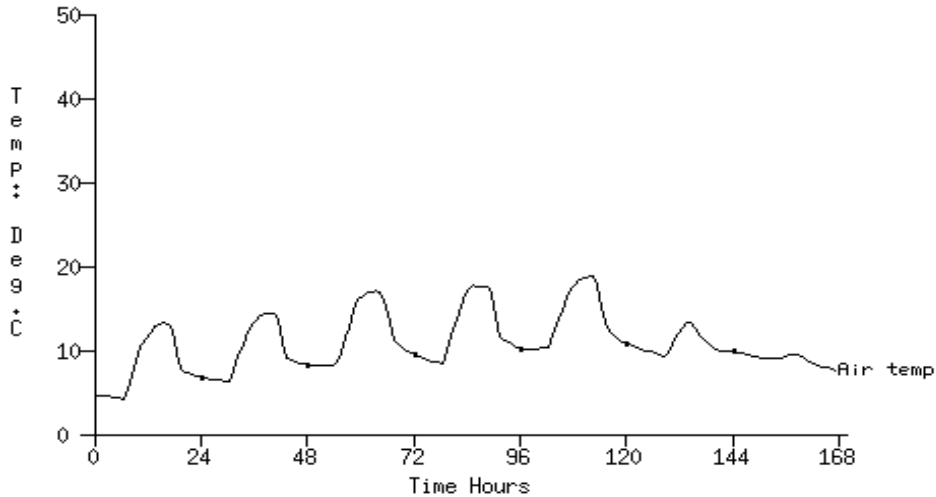
A simulation is now performed via the *Simulator* using the climate file `~esru/esp-r/climate/clm67`. Two simulations should be performed, saving both in the same results library called, for example, `ex1.res`. The first should span the period 9th January to 15 January inclusive. The second should span the period 11 July to 17 July inclusive. Both simulations should have a one hour time-step.

Now *Results Analysis Module* is used to see the results obtained from the simulation. After entering the library name (`ex1.res` in this case) you can select *graph*, *time-variable* and *inside air temperature* to obtain a common temperature-profile of the inside air. According to these profiles (see figures), the following items can be discussed (you should generate these profiles yourself):

- 1) In winter the maximum heating capacity of the actuated control is not satisfactory to achieve the heating setpoint (20°C from 9h00 to 18h00) of the inside air. To perform the next simulation, you can change this maximum heating capacity for instance up to 3000 [W], you will notice that now -during weekdays- the setpoint temperature is reached during the afternoon (figure 4.1.11 and 4.1.13). The new control file is listed below in figure 4.1.12.
- 2) In summer the cooling setpoint (100°C from 7h00 to 18h00) never actuates the cooling capacity because this setpoint-temperature never occurs. In the new control file (figure 4.1.11) this setpoint-temperature is adapted to 25°C actuating a cooling

capacity of 3000 W. If you generate a temperature-profile now you can see that the inside air temperature is decreased during weekday.

Tsteps: sim@ 60m, output@ 60m (not averaged) Lib:res\_9\_15.jan  
 Period: Mon 9 Jan @ 0h30 to: Sun 15 Jan @23h30 YEAR:1967  
 Zones: 1,



Tsteps: sim@ 60m, output@ 60m (not averaged) Lib:res11\_17.jul  
 Period: Tue 11 Jul @ 0h30 to: Mon 17 Jul @23h30 YEAR:1967  
 Zones: 1,

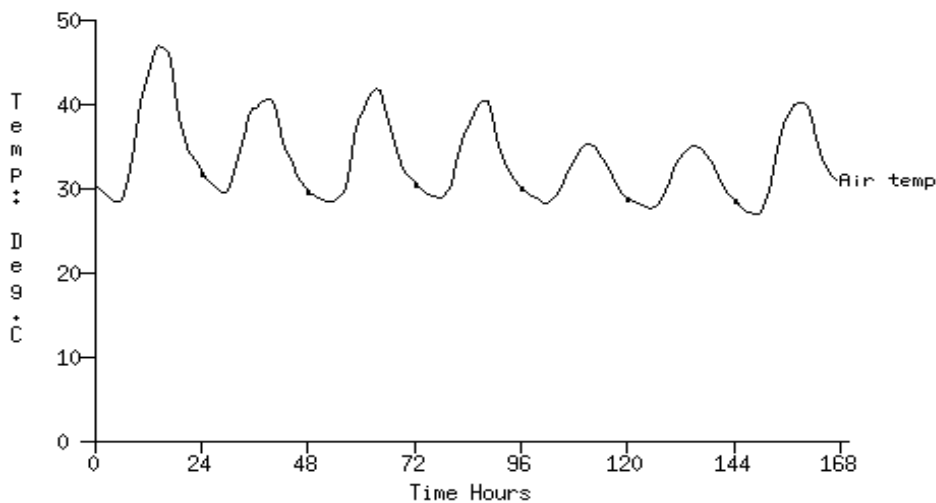


Figure 4.1.11 Temperature profiles for control as listed in fig. 4.1.10.

```
office_control
* Building
convec heating
1
* Control function
0 0 0 0
0 0 0
0
```

```

1 365
3
0 2 0.000
0.0
0 1 7.000
6.0
3000.0000 0. 3000.0000 0. 20.0000 25.0000
0 2 18.000
0.0
1 365
1
0 2 0.000
0.0
1 365
1
0 2 0.000
0.0
1

```

Figure 4.1.12 Listing of the new control file

#### 4.12.1b Additional shading analysis

In the previous test, only a default insolation distribution has been used (i.e.. all internal surfaces receiving diffuse solar incidence). Before defining the geometry of the first test, we didn't take any notice of subjects like *solar insolation distribution*, *obstruction blocks* and *rotation & transforms*. These subjects affect the time-series dependent solar incidence.

In order to increase the resolution of the problem (to make the problem more corresponding to reality) a second variant is included called *bld\_simple\_shd.cfg*. You may access this by specifying it as the problem name and the relevant information will be loaded. As you can see a large obstruction (for instance a flat-block) is created at the south-side of the office.

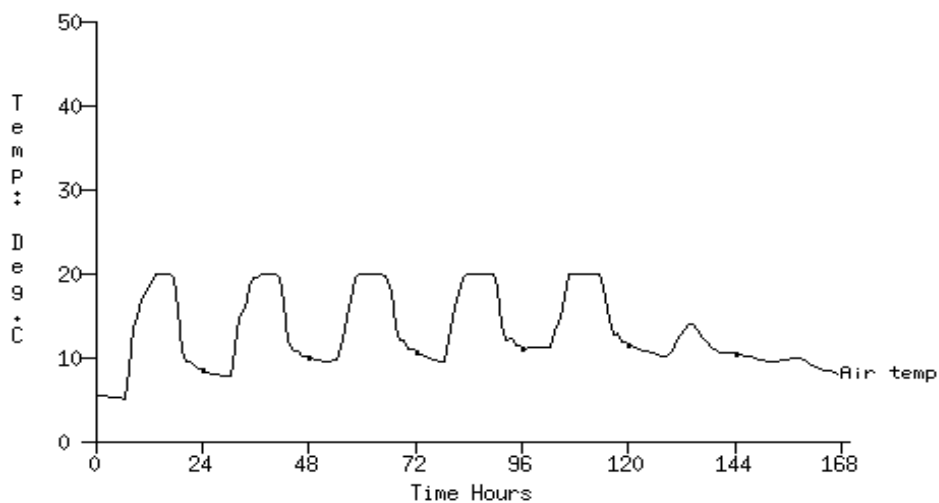
If you select *obstruction blocks* from the *geometry*-menu you can see in detail that this obstruction is build out of four blocks. In this menu you now can change the geometry of this blocks in order to make it cope with the outdoor situation you wish to simulate. Again don't forget to update this new situation into the new obstruction file. Obstruction data are listed below in Figure 4.1.14.

```

# site obstruction file defined in reception.obs
# associated with zone geometry file reception.geo
# and referenced by zone utility file reception_shd.utl
51.700 -0.500 # latitude & longitude
4 # no obstruction blocks
# origin X Y Z width depth height angle descr
-5.000 -7.000 0.000 5.800 1.000 25.000 0.0 blk_1 # block 1

```

Tsteps: sim@ 60m, output@ 60m (not averaged) Lib:janres  
 Period: Mon 9 Jan @ 0h30 to: Sun 15 Jan @23h30 YEAR:1967  
 Zones: 1,



Tsteps: sim@ 60m, output@ 60m (not averaged) Lib:julyres  
 Period: Tue 11 Jul @ 0h30 to: Mon 17 Jul @23h30 YEAR:1967  
 Zones: 1,

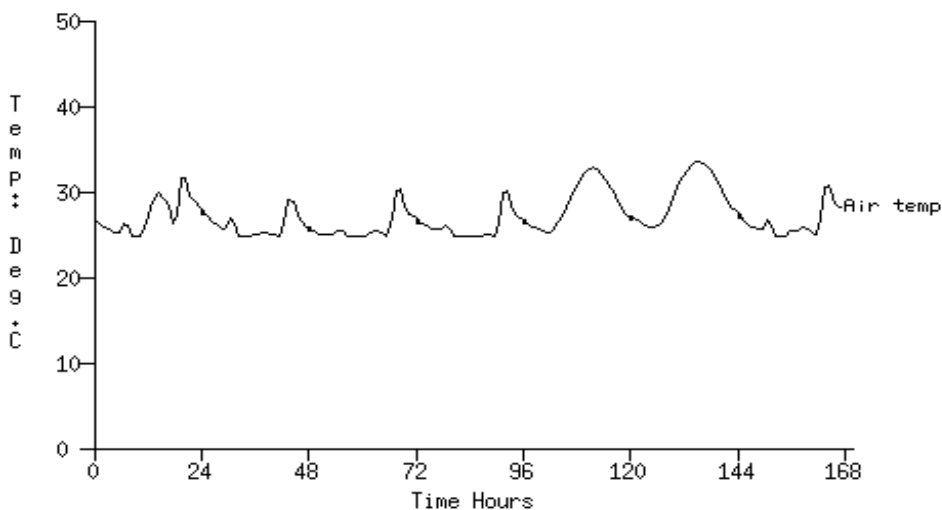


Figure 4.1.13 Temperature profiles for control as listed in fig. 4.1.12.

1.200	-7.000	0.000	3.600	1.000	25.000	0.0	blk_2	# block 2
5.200	-7.000	0.000	3.600	1.000	25.000	0.0	blk_3	# block 3
9.200	-7.000	0.000	10.800	1.000	25.000	0.0	blk_4	# block 4
# grid opq X opq Z win X win Z								
20	20	5	5					

Figure 4.1.14 Obstruction data

The next action to perform is to go back to the main menu and to start the *Shading/Insolation Module* via the *shading & insolation* option. This program calculates the

insolation distribution and it writes the results to a database for use in subsequent simulations.

The results that you will obtain now show no difference in winter. In this period the solar radiation is not remarkable. However in summer (cooling capacity 1000 W, actuated at 25°C) a slight difference occurs as you can see from Figure 4.1.15. Note that in these figures the internal and external surface temperatures of the south wall are drawn instead of the inside air temperature.

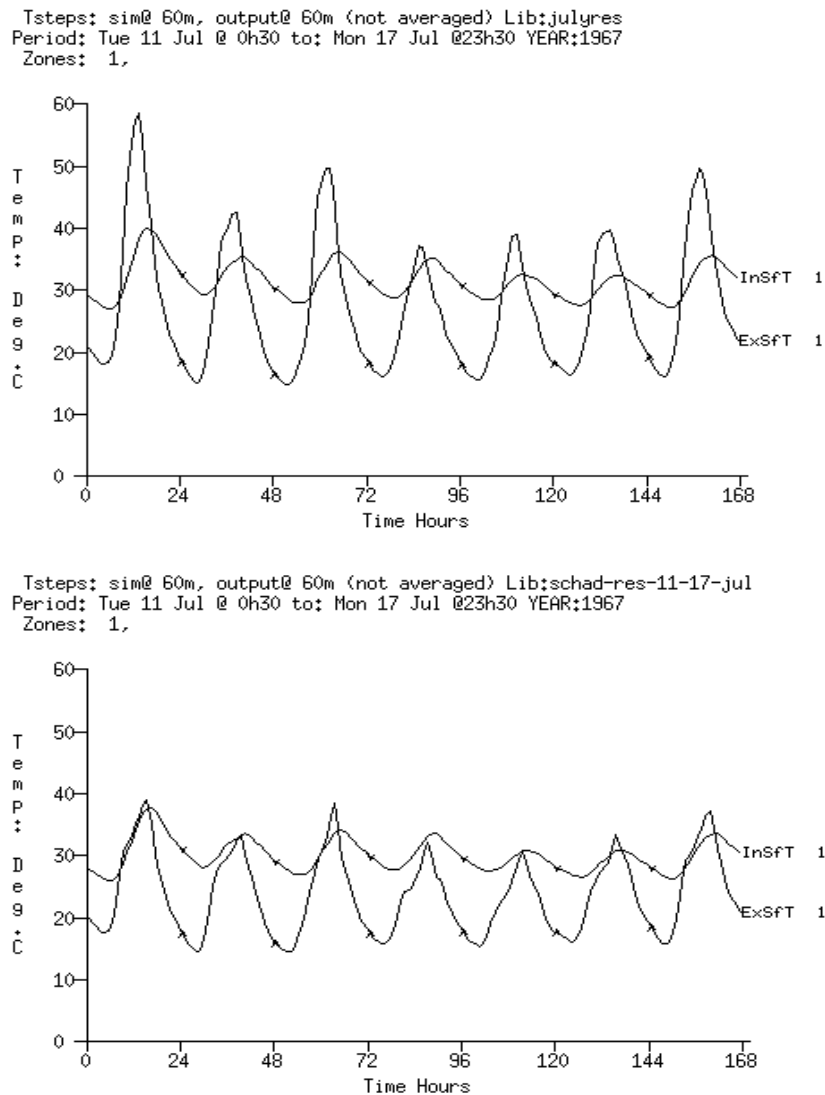


Figure 4.1.15 Temperature-profiles for summer.

If no shading/insolation database exists, the default insolation distribution of the zone operations file will be used. In this case ESP-r assumes no obstructions so that only the building geometry is needed for calculation of the insolation distribution.

### 4.12.2 Simple building

We now move to a multi-zone problem and ask what will be the effect on winter heating energy and summer overheating. Again there is no need to generate the zone and configuration files since the data has already been prepared and can be copied from directory `~esru/esp-r/training/basic`.

This directory contains several subdirectories including one that contains different problem configurations. A discussion of each of the problems is contained in the files `cfg/bld_basic*.log` which may be looked at via a text editor or by the facilities provided in the project manager. A summary of these configurations is included below.

file	description
<code>bld_basic.cfg</code>	basic three zone model
<code>bld_basic_shd.cfg</code>	model with shading
<code>bld_basic_af1.cfg</code>	model with infiltration
<code>bld_basic_af2.cfg</code>	model with controlled infiltration
<code>bld_basic_prht.cfg</code>	model with ideal pre-heat control
<code>bld_basic_sns.cfg</code>	model with zone temperature matching

Each problem assumes the same building geometry and construction, only different utilities are added. The building geometry is shown below in Figure 4.2.1.

Rather than list each of the different problem files the user is invited to make use of the display facilities within the project manager or the various UNIX file listing facilities. At least you should list the different configuration files to see how the `bld_basic.cfg` geometry is used for describing different problems.

Now perform the same winter and summer simulations as were performed initially in training session 1 for the base case problem `bld_basic.cfg`. Using the results analysis program you should now compare your results with the corresponding results for the winter period 9 to 15 January in the following listings (assuming the default climate collection).



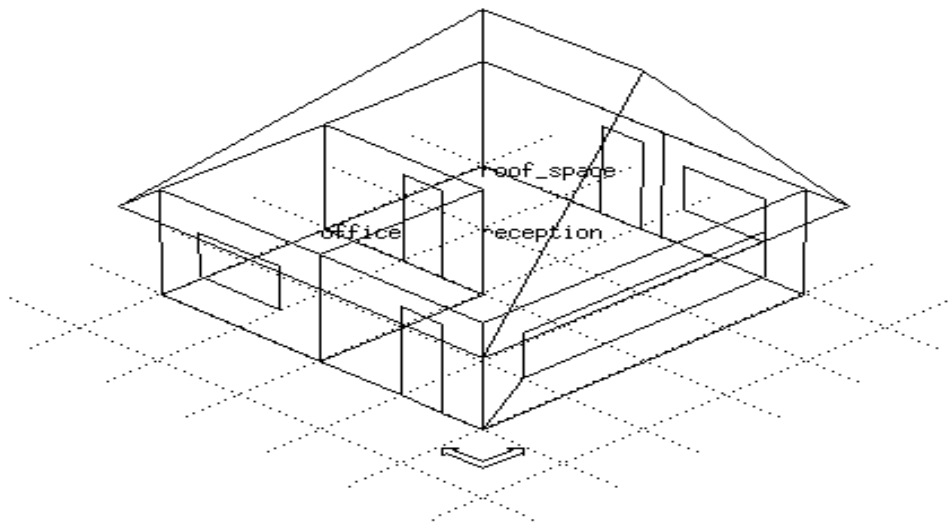


Figure 4.2.1 Simple\_building geometry.

Selected monthly energy statistics (kWhr) by zone.

Period: Mon 9 Jan @ 0h30 to: Sun 15 Jan @ 23h30 YEAR:1967

Tsteps: sim@ 60m, output@ 60m (not averaged)

Zone	Period	Windows*	ML constr.**		Casual Gains	Infil.	Plant			
		in conduc- air	int.surf.conv	conv. radnt.	& Vent Heat	Cool				
		tion  point	int. ext.							
1 reception	Jan	-14.1 0.5	-31.3 -49.3	139.2 38.2	-64.4 19.5	0.0				
2 office	Jan	-21.3 0.2	-17.5 -14.0	5.8 2.6	0.4 46.4	0.0				
3 roof_spac	Jan	0.0 0.0	10.1 -21.2	11.2 16.3	0.0 0.0	0.0				
All zones	Jan	-35. 1.	-39. -85.	156. 57.	-64. 66.	0.				

\* Default windows (internal & external) include:  
cond. (conduction via glass), air (air point solar load.)

\*\* Opaque & transparent multilayer construction: via  
conduction from surfaces facing zone (internal/external).  
Note that connections to ground are considered internal.

Interrogation output for result-set 1

Period: Mon 9 Jan @ 0h30 to: Sun 15 Jan @ 23h30 YEAR:1967

Tsteps: sim@ 60m, output@ 60m (not averaged)

Zone radiant & convective plant used (kWhrs)

Zone	Heating	Cooling
id name	Energy No. of	Energy No. of

	(kWhrs)	Hr rqd	(kWhrs)	Hr rqd
1 reception	19.541	39.0	0.000	0.0
2 office	46.428	60.0	0.000	0.0
3 roof_space	0.000	0.0	0.000	0.0
All	65.969		0.000	
Casual gains summary (kWhrs) for zone 1: reception Period: Mon 9 Jan @ 0h30 to: Sun 15 Jan @23h30 YEAR:1967 Tsteps: sim@ 60m, output@ 60m (not averaged)				
Casual gain		Convect		Total
		portion		Radiant
				external
				internal
				ground
UC type 1 @opq	17.280	4.271	1.133	3.139
UC type 1 @trn	0.049	0.049	0.000	0.000
UC type 2 @opq	0.000	3.322	0.881	2.441
UC type 2 @trn	0.038	0.038	0.000	0.000
UC type 3 @opq	121.920	30.137	7.992	22.145
UC type 3 @trn	0.343	0.343	0.000	0.000
Totals	139.200	38.160	10.435	27.725
@opq = associated with opaque MLC, @trn = associated with transparent MLC, UC = uncontrolled, C = controlled, all in kWhr.				
Causal energy breakdown (kWhrs) at air point for zone 1: reception Period: Mon 9 Jan @ 0h30 to: Sun 15 Jan @23h30 YEAR:1967 Tsteps: sim@ 60m, output@ 60m (not averaged)				
	Gain	Loss		
Infiltration air load	0.000	-35.797		
Ventilation air load	0.179	-28.828		
Default Window cond: ext	0.000	-14.123		
Default Window cond: int	0.000	0.000		
Default Door cond: ext	0.000	0.000		
Default Door cond: int	0.000	0.000		
Air point solar load *	0.509	0.000		
Uncontr'd casual type 1	17.280	0.000		
Uncontr'd casual type 2	0.000	0.000		
Uncontr'd casual type 3	121.920	0.000		
Controlled casual type 1	0.000	0.000		
Controlled casual type 2	0.000	0.000		
Controlled casual type 3	0.000	0.000		
Opaque MLC convec: ext	0.000	-28.412		
Opaque MLC convec: int	2.765	-34.043		
Transp MLC convec: ext	0.021	-20.900		
Transp MLC convec: int	0.000	0.000		

Convec portion of plant	19.541	0.000			
Totals	162.215	-162.104			
Causal energy breakdown (Whrs) for south ( 1) in reception ( 1) Surface is opaque MLC, area= 16.50m2 & connects to the outside Period: Mon 9 Jan @ 0h30 to: Sun 15 Jan @23h30 YEAR:1967 Tsteps: sim@ 60m, output@ 60m (not averaged)					
	Facing Zone 1		Facing Zone 0		
	Gain	Loss	Gain	Loss	
Conductive flux	0.00	-16106.23	29184.56	-15845.35	
Convective flux	7822.55	-6.54	10173.91	-13390.11	
Longwave rad int	4049.18	-325.08	--	--	
LW rad ext >bldg	--	--	20.32	-1908.40	
LW rad ext >sky	--	--	0.00	-64480.62	
LW rad ext >grnd	--	--	11175.86	-1975.07	
Shortwave rad.	1408.22	0.00	47656.58	0.00	
Unctrl cas typ 1	385.34	0.00	--	--	
cas typ 2	299.71	0.00	--	--	
cas typ 3	2718.81	0.00	--	--	
Cntrl cas typ 1	0.00	0.00	--	--	
cas typ 2	0.00	0.00	--	--	
cas typ 3	0.00	0.00	--	--	
Heat stored	1837.48	-2083.43	8037.96	-8649.63	
Plant	0.00	0.00	0.00	0.00	
Totals	18521.29	-18521.28	106249.20	-106249.19	
Casual gains summary (kWhrs) for zone 2: office Period: Mon 9 Jan @ 0h30 to: Sun 15 Jan @23h30 YEAR:1967 Tsteps: sim@ 60m, output@ 60m (not averaged)					
Casual gain	Convect	Total	Radiant by connection type		
	portion	Radiant	external	internal	ground
UC type 1 @opq	5.760	1.440	0.397	0.744	0.299
UC type 1 @trn		0.000	0.000	0.000	0.000
UC type 2 @opq	0.000	1.120	0.309	0.578	0.233
UC type 2 @trn		0.000	0.000	0.000	0.000
UC type 3 @opq	0.000	0.000	0.000	0.000	0.000
UC type 3 @trn		0.000	0.000	0.000	0.000
Totals	5.760	2.560	0.706	1.322	0.532
@opq = associated with opaque MLC, @trn = associated with transparent MLC, UC = uncontrolled, C = controlled, all in kWhr.					
Causal energy breakdown (kWhrs) at air point for zone 2: office Period: Mon 9 Jan @ 0h30 to: Sun 15 Jan @23h30 YEAR:1967 Tsteps: sim@ 60m, output@ 60m (not averaged)					

	Gain	Loss
Infiltration air load	0.000	-9.078
Ventilation air load	9.531	-0.017
Default Window cond: ext	0.000	-21.286
Default Window cond: int	0.000	0.000
Default Door cond: ext	0.000	0.000
Default Door cond: int	0.000	0.000
Air point solar load *	0.219	0.000
Uncontr'd casual type 1	5.760	0.000
Uncontr'd casual type 2	0.000	0.000
Uncontr'd casual type 3	0.000	0.000
Controlled casual type 1	0.000	0.000
Controlled casual type 2	0.000	0.000
Controlled casual type 3	0.000	0.000
Opaque MLC convec: ext	1.244	-15.231
Opaque MLC convec: int	4.804	-22.338
Transp MLC convec: ext	0.000	0.000
Transp MLC convec: int	0.000	0.000
Convec portion of plant	46.428	0.000
Totals	67.987	-67.952

Figure 4.2.2 Tabular statistics during winter simulation period.

From this tabular report you can see that during the simulation period, the office requires most heating energy (46 kWh) while the reception loses most energy (160 kWh). The energy statistics table and the causal energy breakdown table show that the reception zone loses most energy due to conduction (total 80 kWh). However the reception zone also suffers a high casual gain from equipment (type 3) so the reception net heat loss is less than the office net heat loss.

If you look to the operation files you will see that a coupled air flow from the reception into the office is defined. In the listed energy statistics you can see that (due to this interzonal airflow) the heat loss from the reception to the office is more or less 10 kWh.

Next you should perform the same simulation for the summer (11-17 July) and generate a tabular report. You will obtain results as listed below.

Selected monthly energy statistics (kWhr) by zone.

Period: Tue 11 Jul @ 0h30 to: Mon 17 Jul @ 23h30 YEAR:1967

Tsteps: sim@ 60m, output@ 60m (not averaged)

Zone	Period	Windows*	[ML constr.**	Casual Gains	Infil.	Plant
		in conduc- air	int.surf.conv	conv. radnt. & Vent Heat	Cool	
		tion  point  int. ext.				
1 reception	Jul	-12.7 4.5	-30.7 -19.9	139.2 38.2	-80.3 0.0	0.0
2 office	Jul	-10.4 2.5	-5.1 -4.7	5.8 2.6	11.9 0.0	0.0
3 roof_spac	Jul	0.0 0.0	2.8 -14.0	11.2 16.3	0.0 0.0	0.0
All zones	Jul	-23. 7.	-33. -39.	156. 57.	-68. 0.	0.

\* Default windows (internal & external) include:

cond. (conduction via glass), air (air point solar load.)

\*\* Opaque & transparent multilayer construction: via

conduction from surfaces facing zone (internal/external).

Note that connections to ground are considered internal.

Interrogation output for result-set 1

Period: Tue 11 Jul @ 0h30 to: Mon 17 Jul @ 23h30 YEAR:1967

Tsteps: sim@ 60m, output@ 60m (not averaged)

Zone radiant & convective plant used (kWhrs)

Zone	Heating	Cooling
id name	Energy No. of	Energy No. of
	(kWhrs) Hr reqd	(kWhrs) Hr reqd
1 reception	0.000 0.0	0.000 0.0
2 office	0.000 0.0	0.000 0.0
3 roof_space	0.000 0.0	0.000 0.0
All	0.000	0.000

Casual gains summary (kWhrs) for zone 1: reception

Period: Tue 11 Jul @ 0h30 to: Mon 17 Jul @ 23h30 YEAR:1967

Tsteps: sim@ 60m, output@ 60m (not averaged)

Casual gain	Convect	Total	Radiant by connection type
	portion	Radiant	external internal ground
UC type 1 @opq	17.280	4.271	1.133 3.139 0.000
UC type 1 @trn		0.049	0.049 0.000 0.000
UC type 2 @opq	0.000	3.322	0.881 2.441 0.000
UC type 2 @trn		0.038	0.038 0.000 0.000
UC type 3 @opq	121.920	30.137	7.992 22.145 0.000
UC type 3 @trn		0.343	0.343 0.000 0.000
Totals	139.200	38.160	10.435 27.725 0.000

@opq = associated with opaque MLC,  
 @trn = associated with transparent MLC,  
 UC = uncontrolled, C = controlled, all in kWhr.

Causal energy breakdown (kWhrs) at air point for zone 1: reception  
 Period: Tue 11 Jul @ 0h30 to: Mon 17 Jul @ 23h30 YEAR:1967  
 Tsteps: sim@ 60m, output@ 60m (not averaged)

	Gain	Loss
Infiltration air load	0.000	-29.759
Ventilation air load	0.000	-50.511
Default Window cond: ext	0.000	-12.651
Default Window cond: int	0.000	0.000
Default Door cond: ext	0.000	0.000
Default Door cond: int	0.000	0.000
Air point solar load *	4.510	0.000
Uncontr'd casual type 1	17.280	0.000
Uncontr'd casual type 2	0.000	0.000
Uncontr'd casual type 3	121.920	0.000
Controlled casual type 1	0.000	0.000
Controlled casual type 2	0.000	0.000
Controlled casual type 3	0.000	0.000
Opaque MLC convec: ext	1.258	-14.654
Opaque MLC convec: int	0.213	-30.938
Transp MLC convec: ext	3.420	-9.899
Transp MLC convec: int	0.000	0.000
Convec portion of plant	0.000	0.000
Totals	148.601	-148.412

Causal energy breakdown (Whrs) for south ( 1) in reception ( 1)  
 Surface is opaque MLC, area= 16.50m2 & connects to the outside  
 Period: Tue 11 Jul @ 0h30 to: Mon 17 Jul @ 23h30 YEAR:1967  
 Tsteps: sim@ 60m, output@ 60m (not averaged)

	Facing Zone 1		Facing Zone 0	
	Gain	Loss	Gain	Loss
Conductive flux	4721.47	-11392.12	86257.12	-81218.40
Convective flux	4928.98	-1191.62	95.71	-152806.64
Longwave rad int	629.11	-9413.97	--	--
LW rad ext >bldg	--	--	130.47	-10867.78
LW rad ext >sky	--	--	0.00	-116121.70
LW rad ext >grnd	--	--	177.24	-50955.58
Shortwave rad.	8829.52	0.00	325326.09	0.00
Unctrl cas typ 1	385.34	0.00	--	--
cas typ 2	299.71	0.00	--	--
cas typ 3	2718.81	0.00	--	--
Cntrl cas typ 1	0.00	0.00	--	--

cas typ 2	0.00	0.00	--	--
cas typ 3	0.00	0.00	--	--
Heat stored	2774.05	-3289.23	30477.60	-30494.03
Plant	0.00	0.00	0.00	0.00
Totals	25286.99	-25286.95	442464.22	-442464.09
Casual gains summary (kWhrs) for zone 2: office				
Period: Tue 11 Jul @ 0h30 to: Mon 17 Jul @23h30 YEAR:1967				
Tsteps: sim@ 60m, output@ 60m (not averaged)				
Casual gain	Convect	Total	Radiant by connection type	
	portion	Radiant	external	internal ground
UC type 1 @opq	5.760	1.440	0.397	0.744 0.299
UC type 1 @trn		0.000	0.000	0.000 0.000
UC type 2 @opq	0.000	1.120	0.309	0.578 0.233
UC type 2 @trn		0.000	0.000	0.000 0.000
UC type 3 @opq	0.000	0.000	0.000	0.000 0.000
UC type 3 @trn		0.000	0.000	0.000 0.000
Totals	5.760	2.560	0.706	1.322 0.532
@opq = associated with opaque MLC,				
@trn = associated with transparent MLC,				
UC = uncontrolled, C = controlled, all in kWhr.				
Causal energy breakdown (kWhrs) at air point for zone 2: office				
Period: Tue 11 Jul @ 0h30 to: Mon 17 Jul @23h30 YEAR:1967				
Tsteps: sim@ 60m, output@ 60m (not averaged)				
	Gain	Loss		
Infiltration air load	0.000	-4.881		
Ventilation air load	16.797	0.000		
Default Window cond: ext	0.000	-10.414		
Default Window cond: int	0.000	0.000		
Default Door cond: ext	0.000	0.000		
Default Door cond: int	0.000	0.000		
Air point solar load *	2.538	0.000		
Uncontr'd casual type 1	5.760	0.000		
Uncontr'd casual type 2	0.000	0.000		
Uncontr'd casual type 3	0.000			
Causal energy breakdown (Whrs) for West_w ( 4) in office ( 2)				
Surface is opaque MLC, area= 9.50m2 & connects to the outside				
Period: Tue 11 Jul @ 0h30 to: Mon 17 Jul @23h30 YEAR:1967				
Tsteps: sim@ 60m, output@ 60m (not averaged)				
	Facing Zone 2		Facing Zone 0	
	Gain	Loss	Gain	Loss
Conductive flux	4622.67	-3264.31	47702.53	-49506.59

Convective flux	2592.00	-689.66	109.20	-71829.94
Longwave rad int	700.83	-5732.03	--	--
LW rad ext >bldg	--	--	3400.98	-5749.41
LW rad ext >sky	--	--	0.00	-69593.95
LW rad ext >grnd	--	--	177.87	-32013.02
Shortwave rad.	1593.01	0.00	177342.20	0.00
Unctrl cas typ 1	175.57	0.00	--	--
cas typ 2	136.56	0.00	--	--
cas typ 3	0.00	0.00	--	--
Cntrl cas typ 1	0.00	0.00	--	--
cas typ 2	0.00	0.00	--	--
cas typ 3	0.00	0.00	--	--
Heat stored	1319.85	-1454.46	18571.47	-18611.29
Plant	0.00	0.00	0.00	0.00
Totals	11140.49	-11140.46	247304.25	-247304.19

Figure 4.2.3 Tabular statistics during summer simulation period.

The heat loss due to the conduction through building partitions is less and infiltration & ventilation becomes the greatest heat loss factor. Because of the internal casual gains and the high cooling setpoint-temperature (100°C as you can see from the control file) no heating or cooling energy is required.

For example now it is interesting to run a simulation (winter and summer) to establish the heating and cooling energy required to maintain the zone 1 and 2 air temperatures constant at a setpoint of 24°C during the control period.

Therefore, first you should adapt the control file (or make a new one) to change the capacity and setpoint temperatures of both the heating and cooling plant. You can enter an extremely high capacity in order to be sure that the set-point temperature is reached when the control period starts. You should run the simulations and check the calculated temperature profiles using the *Results Analysis Module*. Finally, you can find the required energy data from the energy statistics.

When you perform the simulations correctly, you will find 60 and 70 kWh respectively for the reception and the office in winter and 130 and 6 kWh in summer. Due to the high casual gain in the reception less heating energy is required in winter and more cooling energy is required in summer. You can perform the same simulations as has been done for the basic problem configuration, for the other configurations.

#### 4.12.2b Additional fluid flow analysis

At the start of training session 2, a summary of the files *bld\_basic\*.log* was given. As you can see, two problem definition files exist in which fluid flows are governed by a flow network. Below, a summary of these problem definition files is included.

file	description
bld_basic_af1.cfg	basic building model with infiltration
bld_basic_af2.cfg	basic building model with controlled infiltration



The basic building with air movement is restricted to flows via crack openings (under doors and around windows) in the occupied spaces. Separately, the roof is vented by soffit and ridge vents. Use the configuration control file *bld\_basic.ctl* which provides 1kW to the reception and office.

A variation is the base case with the addition of a component 'door' between the rooms in the mass flow network and a window which is controlled. Browse and use the configuration control file *bld\_basic\_af2.ctl*.

The base case mass flow network is described in *bld\_basic\_af1.afn* and contains four boundary nodes (north, east, south, west) and three nodes (roof, recep, offic) which match the thermal zones. Mass flow components (drck, winck, soffit, roofv) define the flow restrictions. The flow paths are between each zone and the outside via window cracks and between the two occupied rooms via a crack under the door. The roof space has two flow paths to the outside - one through the soffit and one by way of the roof vent.

The mass flow network with window control is *bld\_basic\_af2.afn*. The control is made via a configuration control file *bld\_basic\_af2.ctl*. A window in the reception is assumed to open if the room temperature rises above 20°C. A similar set of paths is defined for the office.

During a summer simulation the flow is restricted to the cracks in the windows until the room warms. Then the window opens, flow is allowed and then when the temperature drops below 20°C the window closes. In the results analysis you will probably detect a sawtooth pattern as the window opens and closes. The decision to open or close the window is only taken once per timestep and you should experiment with different simulation timesteps to see how this ventilation control changes.

As it is important to check the *leakage characteristic* of a space, we will first discuss a simple simulation of the fan pressurisation method.

A simple fan pressurisation apparatus consists essentially of a large variable-speed fan with an attached air flow measuring station. The rig is sealed into the doorway of the space under test with internal and external connections taken to a differential micromanometer. The flow rate is measured over a range of pressure differences between 10 and 100 Pascals and the results presented as a curve of volume flow rate against pressure difference. This curve (with leakage parameters  $k$  and  $n$ ) can be fitted by an expression of the form;

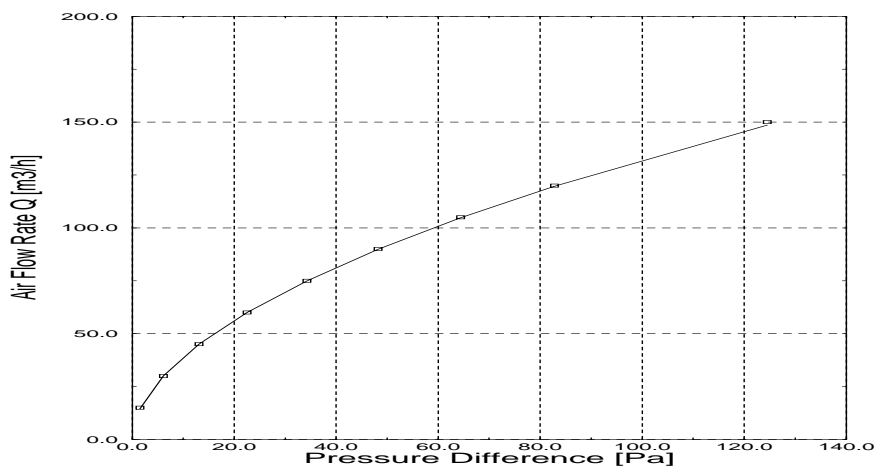
$$Q = k(\Delta P)^n$$

In order to simulate fan pressurisation, a mass flow network description as printed in Figure 4.2.4 can be used. Only air leakages (door and window cracks) in the reception zone (space under test) are considered. These air leakages (or flow restrictions) are determined by a thorough investigation of the room partitions. The fan pressurisation apparatus is simulated by a constant mass flow component in the east door. By altering the constant mass flow rate and reading the corresponding pressure differences from the results file, the leakage curve can be calculated (Figure 4.2.5).

7	5	3	1.000	(nodes, components, connections, wind reduction)
---	---	---	-------	--

Node	Fld.	Type	Height	Temperature	Data_1	Data_2
north	1	3	0.0000	0.	32.000	0.
east	1	3	0.0000	0.	32.000	90.000
south	1	3	0.0000	0.	32.000	180.00
west	1	3	0.0000	0.	32.000	270.00
roof	1	0	0.0000	20.000	0.	49.000
recep	1	0	0.0000	20.000	0.	144.00
offic	1	0	0.0000	20.000	0.	48.000
Comp	Type	C+ L+ Description				
drcrk	120 3 0	Specific air flow crack			m = rho.f(W,L,dP)	
	1.00000	1.00000E-02	1.00000			
wincrk	120 3 0	Specific air flow crack			m = rho.f(W,L,dP)	
	1.00000	5.00000E-03	3.00000			
soffit	110 2 0	Specific air flow opening			m = rho.f(A,dP)	
	1.00000	1.00000E-02				
roofv	110 2 0	Specific air flow opening			m = rho.f(A,dP)	
	1.00000	2.00000E-02				
fan	35 3 0	Constant mass flow rate component			m = rho.f(A,dP)	
	1.00000	0.05000	0.			
+Node	dHght	-Node	dHght	Comp	Snod1	Snod2
south	0.000	recep	0.000	wincrk		
west	0.000	recep	0.000	drcrk		
east	0.000	recep	0.000	fan		
# pressurisation reception						

Figure 4.2.4 Fluid flow network describing pressurisation



$$\begin{aligned}
 n &= 0.53 \\
 k &= 3.20 \text{ [dm}^3/\text{s} * \text{Pa}^{1/n}] \\
 Q_{v,10} &= 14.0 \text{ [dm}^3/\text{s]} \text{ (NEN 2686, Netherlands)}
 \end{aligned}$$

Figure 4.2.5 Leakage characteristic (simulated) for the reception zone. The graph is drawn by use of copying the predicted flow data to the XVGR tool.

The leakage characteristic as printed above should be compared with data acquired by performing a fan pressurisation (as already explained). In case differences occur between measured data and simulation results, flow restrictions should be altered. For now we assume simulation results to be correct (i.e. more or less in agreement with the measured data). Reading National Standards on pressurisation testing you will find these leakage parameters to be very low and satisfying.

Now, when copying leakage data of various zones to an overall building mass flow network, you are able to perform accurate simulations concerning energy gains and losses due to infiltration and ventilation. Results for a winter's simulation are printed below in Figure 4.2.6. Comparing these data to the ones printed in Figure 4.2.2 you will find the reception infiltration and ventilation energy loss to be less.

Selected monthly energy statistics (kWhr) by zone.										
Period: Sat 9 Jan @ 0h30 to: Fri 15 Jan @23h30 YEAR:1960										
Tsteps: sim@ 60m, output@ 60m (not averaged)										
Zone	Period	Windows*	ML constr.**		Casual Gains		Infil.	Plant		
		in conduc- air	int.surf.conv	conv. radnt. &	Vent	Heat	Cool			
		tion  point	int. ext.							
1 reception	Jan	-21.7 0.8	-52.9 -64.2	139.2 38.2	-10.1 9.0	0.0				
2 office	Jan	-27.9 0.5	-8.1 -11.6	5.8 2.6	-2.1 43.6	0.0				
3 roof_spac	Jan	0.0 0.0	14.9 -24.9	11.2 16.3	-1.1 0.0	0.0				
All zones Jan -50. 1. -46. -101. 156. 57. -13. 53. 0.										
* Default windows (internal & external) include:										
cond. (conduction via glass), air (air point solar load.)										
** Opaque & transparent multilayer construction: via										
conduction from surfaces facing zone (internal/external).										
Note that connections to ground are considered internal.										
Interrogation output for result-set 1										
Period: Sat 9 Jan @ 0h30 to: Fri 15 Jan @23h30 YEAR:1960										
Tsteps: sim@ 60m, output@ 60m (not averaged)										
Zone radiant & convective plant used (kWhrs)										
Zone	Heating		Cooling							
id name	Energy		No. of	Energy	No. of					
	(kWhrs)		Hr reqd	(kWhrs)	Hr reqd					
1 reception	9.022		22.0	0.000	0.0					
2 office	43.578		60.0	0.000	0.0					
3 roof_space	0.000		0.0	0.000	0.0					
All	52.600			0.000						

Causal energy breakdown (kWhrs) at air point for zone 1: reception  
 Period: Sat 9 Jan @ 0h30 to: Fri 15 Jan @ 23h30 YEAR:1960  
 Tsteps: sim@ 60m, output@ 60m (not averaged)

	Gain	Loss
Infiltration air load	0.000	-8.859
Ventilation air load	0.000	-1.224
Default Window cond: ext	0.000	-21.737
Default Window cond: int	0.000	0.000
Default Door cond: ext	0.000	0.000
Default Door cond: int	0.000	0.000
Air point solar load *	0.816	0.000
Uncontr'd casual type 1	17.280	0.000
Uncontr'd casual type 2	0.000	0.000
Uncontr'd casual type 3	121.920	0.000
Controlled casual type 1	0.000	0.000
Controlled casual type 2	0.000	0.000
Controlled casual type 3	0.000	0.000
Opaque MLC convec: ext	0.000	-36.295
Opaque MLC convec: int	0.073	-53.000
Transp MLC convec: ext	0.035	-27.979
Transp MLC convec: int	0.000	0.000
Convec portion of plant	9.022	0.000
Totals	149.146	-149.094

Causal energy breakdown (kWhrs) at air point for zone 2: office  
 Period: Sat 9 Jan @ 0h30 to: Fri 15 Jan @ 23h30 YEAR:1960  
 Tsteps: sim@ 60m, output@ 60m (not averaged)

	Gain	Loss
Infiltration air load	0.000	-2.630
Ventilation air load	0.483	0.000
Default Window cond: ext	0.000	-27.912
Default Window cond: int	0.000	0.000
Default Door cond: ext	0.000	0.000
Default Door cond: int	0.000	0.000
Air point solar load *	0.485	0.000
Uncontr'd casual type 1	5.760	0.000
Uncontr'd casual type 2	0.000	0.000
Uncontr'd casual type 3	0.000	0.000
Controlled casual type 1	0.000	0.000
Controlled casual type 2	0.000	0.000
Controlled casual type 3	0.000	0.000
Opaque MLC convec: ext	3.199	-14.844
Opaque MLC convec: int	11.728	-19.824
Transp MLC convec: ext	0.000	0.000

Transp MLC convec: int	0.000	0.000
Convec portion of plant	43.578	0.000
Totals	65.232	-65.209
Causal energy breakdown (kWhrs) at air point for zone 3: roof_space		
Period: Sat 9 Jan @ 0h30 to: Fri 15 Jan @ 23h30 YEAR:1960		
Tsteps: sim@ 60m, output@ 60m (not averaged)		
	Gain	Loss
Infiltration air load	6.825	-7.971
Ventilation air load	0.000	0.000
Default Window cond: ext	0.000	0.000
Default Window cond: int	0.000	0.000
Default Door cond: ext	0.000	0.000
Default Door cond: int	0.000	0.000
Air point solar load *	0.000	0.000
Uncontr'd casual type 1	0.000	0.000
Uncontr'd casual type 2	11.200	0.000
Uncontr'd casual type 3	0.000	0.000
Controlled casual type 1	0.000	0.000
Controlled casual type 2	0.000	0.000
Controlled casual type 3	0.000	0.000
Opaque MLC convec: ext	0.031	-24.894
Opaque MLC convec: int	15.650	-0.734
Transp MLC convec: ext	0.000	0.000
Transp MLC convec: int	0.000	0.000
Totals	33.706	-33.598

Figure 4.2.6 Tabular energy statistics of winter simulation

In the basic problem configuration, air change rates of infiltration and ventilation were estimated by 0.3 ( $\sim 43 \text{ m}^3/\text{h}$ ) and 1.0 ( $\sim 144 \text{ m}^3/\text{h}$ ) for the reception zone. If you analyse your mass flow results you will find these rates to be overestimated. With known wind pressure coefficients and wind velocities as boundary conditions, air flows of the reception are in order of magnitude of  $10 \text{ m}^3/\text{h}$  for both infiltration and ventilation. Note that we already mentioned the leakage parameters to be very low.

Finally two temperature profiles (Figure 4.2.7) are added for the reception and office zone. These profiles show the difference calculated between the basic problem (solid line) and the combination with fluid flow simulation (dashed line).

#### 4.12.3 Small house

This training session focuses on the training directory *house/sun\_space* which holds the description of a small dwelling proposed for a remote Scottish island. It is designed for high exposure locations. The provision of a unheated but protected space for inclement weather is part of the design brief. Because of site constraints the model is rotated so that the lounge faces south-west. The dwelling is defined with ten thermal zones:

- 1) combined kitchen and lounge (kitliv)

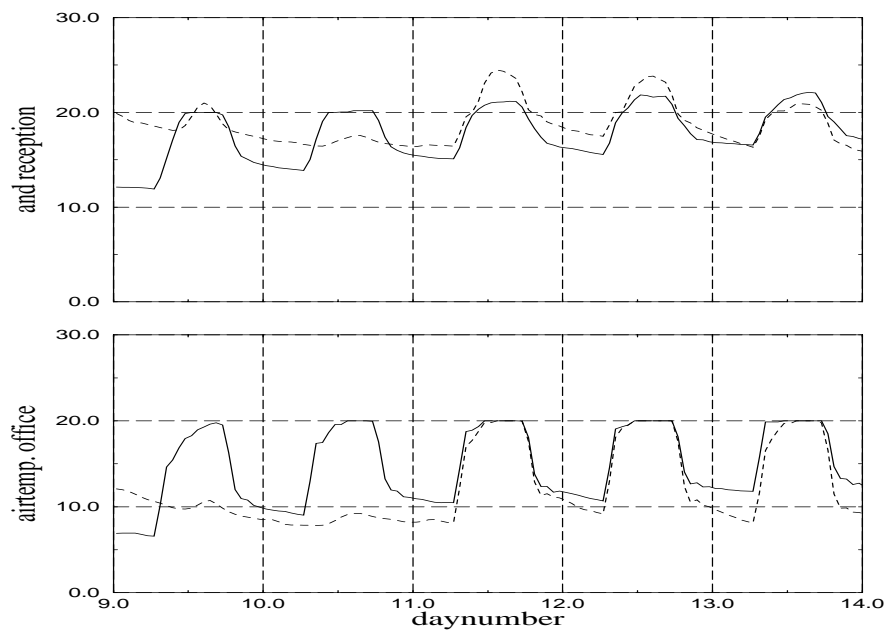


Figure 4.2.7 Temperature profiles for winter simulations.

- 2) hollow south-west wall (west\_space)
- 3) passage (hall)
- 4) bathroom (bath)
- 5) bedroom (bed1)
- 6) bedroom (bed2)
- 7) buffer south-west portion (buf\_1)
- 8) buffer north-east portion (buf\_2)
- 9) upper buffer (buf\_roof)
- 10) roof over occupied space (roof)

The dwelling has deep window reveals and its orientation suggests that a detailed treatment of shading and solar penetration is called for. To this end obstruction blocks define the deep window reveals in the bedrooms and kitchen/lounge and correctly limit sunlight entering the dwelling.

The model uses seasonally adjusted mass flow networks to predict air movements. There are timed extract fans in the kitchen and bathroom as well as logic to open the windows during particular hours and if internal temperatures rise above a particular point. This is defined in the configuration control file.

The subdivision of the buffer space into three thermal zones allows warm air to rise into the upper space but for the front and back of the space to evolve different temperatures as a result of solar radiation patterns. This requires that 'fictitious' boundaries be used between the zones and project based optical properties and multilayer construction databases have been created.

Of interest is the treatment of the south-west wall of the lounge as a separate thermal zone rather than as a conventional multilayer construction. The reason for this is the large void (300mm) within this wall which, thus described, will have a more detailed treatment of radiant exchanges.

There are two configuration files, *house\_win.cfg* which is used for winter simulations and *house\_sum.cfg* for summer simulations. Similarly there are two mass flow network descriptions (*ss\_sum.afn* and *ss\_win.afn* for summer and winter respectively). The control file *ss\_win.ctl* should be used with winter simulations and *ss\_sum.ctl* with summer simulations.

To browse the fluid flow network associated with a given problem use the appropriate command of the project manager. The winter fluid flow network with the corresponding control functions is listed below

13	6	19	1.000	(nodes, components, connections, wind reduction)		
Node	Fld.	Type	Height	Temperature	Data_1	Data_2
liv	1	0	1.2000	20.000	0.	62.500
hall	1	0	1.2000	20.000	0.	40.960
bath	1	0	1.2000	20.000	0.	26.200
bed1	1	0	1.2000	20.000	0.	48.980
bed2	1	0	1.2000	20.000	0.	48.980
buf_1	1	0	1.2000	20.000	0.	113.56
buf_ro	1	0	4.3000	15.000	0.	211.45
ext_we	1	3	1.2000	0.	5.0000	270.00
ext_ea	1	3	1.2000	0.	5.0000	90.000
roof_w	1	3	4.3000	0.	8.0000	270.00
roof_e	1	3	4.3000	0.	8.0000	90.000
north	1	3	2.0000	0.	1.0000	0.
buf_2	1	0	1.2000	20.000	0.	60.000
Comp	Type	C+ L+	Description			
door	130	5 0	Specific air flow door		m = rho.f(W,H,dP)	
	1.00000	0.300000	2.10000	1.50000	0.920000	
horop	110	2 0	Specific air flow opening		m = rho.f(A,dP)	
	1.00000	3.00000				
bathex	460	3 0	Fixed flow rates controller			
	1.00000	0.	2.20000E-02			
bathpm	460	3 0	Fixed flow rates controller			
	1.00000	0.	2.20000E-02			
kitex	460	3 0	Fixed flow rates controller			
	1.00000	0.	1.70000E-02			
crck	120	3 0	Specific air flow crack		m = rho.f(W,L,dP)	
	1.00000	1.00000E-02	1.00000			
+Node	dHght	-Node	dHght	Comp	Snod1	Snod2
ext_we	0.000	liv	0.000	crck		
ext_we	0.000	buf_1	0.000	crck		
ext_ea	0.000	bed2	0.000	crck		

```

ext_ea 0.000 bed1 0.000 crck
ext_ea 0.000 buf_2 0.000 crck
liv 0.000 buf_1 0.000 crck
liv 0.000 hall 0.000 door
hall 0.000 buf_1 0.000 crck
hall 0.000 bath 0.000 crck
hall 0.000 bed1 0.000 crck
hall 0.000 bed2 0.000 crck
buf_1 0.000 buf_ro 0.000 horop
buf_2 1.000 buf_ro -1.000 horop
buf_1 0.000 buf_2 0.000 door
buf_ro 0.000 roof_w 0.000 crck
buf_ro 0.000 roof_e 0.000 crck
liv 0.000 north 0.000 kitex
bath 0.000 north 0.000 bathex
bath 0.000 north 0.000 bathpm

```

\* Mass Flow

opens\_ctl

3

\* Control mass

-4 1 0 0

-3 17 0 0

1

1 365

1

1 0 0.000

1.0

0.0

\* Control mass

-4 3 0 0

-3 18 0 0

1

1 365

3

1 0 0.000

1.0

100.0

1 0 5.990

1.0

0.0

1 0 7.000

1.0

100.0

\* Control mass



```

-4 3 0 0
-3 19 0 0
1
1 365
3
1 0 0.000
1.0
100.0
1 0 17.990
1.0
0.0
1 0 19.000
1.0
100.0

```

Figure 4.3.1 Mass flow description for a small house.

By now, you should be able to extract more detailed information about the problem definition from the different problem files.

As an exercise, three different types of occupants use are considered. Those types resulting in respectively lower (E-), normal (N) and higher (E+) energy consumption are printed below in Table 4.3.2.

Table 4.3.2: Control parameters for different types of occupants use for a single family house.

Variables	Types of occupants use		
	E-	N	E+
Minimum air temperature °C			
- living floor	19	20	21
- first floor	14	16	18
- roof	14	16	18
- night set-back	16	16	16
Infiltration 1/h			
- living floor	0.20	0.40	0.60
- first floor	0.20	0.40	0.60
- roof	0.10	0.20	0.30
Infiltration + ventilation 1/h			
- apartment building	0.3	0.5	1.3
- block-house	0.6	0.8	1.0
- stand alone-house	0.7	1.0	1.3

Six simulations were performed; three simulations in which both temperatures and ventilation were controlled according to Table 4.3.2 and three simulations in which only

temperatures were controlled and ventilation was governed by the original mass flow description as printed in Figure 4.3.1. January 1967 from the climate file clm67 was taken for the simulation period. The control file for one of these simulations (normal energy consumption) is printed in Figure 4.3.3.

```

proj cntrl
* Building
normal occupancy
3
* Control function
0 0 0 0
0 0 0
1
1 365
3
0 1 0.000
6.0
2000.00 0. 0. 0. 16.0000 100.0000
0 1 6.000
6.0
2000.00 0. 0. 0. 20.0000 100.0000
0 1 22.000
6.0
2000.00 0. 0. 0. 16.0000 100.0000
* Control function
0 0 0 0
0 0 0
1
1 365
3
0 1 0.000
6.0
2000.00 0. 0. 0. 16.0000 100.0000
0 1 6.000
6.0
2000.00 0. 0. 0. 16.0000 100.0000
0 1 22.000
6.0
2000.00 0. 0. 0. 16.0000 100.0000
* Control function
0 0 0 0
0 0 0
1
1 365
3
0 1 0.000

```

```

6.0
2000.00 0. 0. 0. 16.0000 100.0000
0 1 6.000
6.0
2000.00 0. 0. 0. 16.0000 100.0000
0 1 22.000
6.0
2000.00 0. 0. 0. 16.0000 100.0000
1 0 1 2 2 2 0 0 0 3

```

Figure 4.3.3 Control file for simulation of normal occupants use.

The simulation results (i.e. total energy consumption in january) are gathered in Table 4.3.4. Occupants use E- and E+ are of the same frequent occurrence as type N: the simulation shows that energy consumption for this house will vary ~230 kWh (15%) within this range of common occupants use. You can also see that the roof needs extra insulation in order to decrease energy consumption. Besides, the simulations with mass flow description show that the original mass flow description correlates (in terms of energy consumption) with the E+ occupants use.

Table 4.3.4: Calculated total energy consumption in January for types E-, N and E+.

Zone	ENERGY CONSUMPTION [kWhr]					
	E-	E-(mfs)	N	N(mfs)	E+	E+(mfs)
- kitchen	54	127	97	138	151	153
- hall	126	141	152	146	178	147
- bath	8	2	13	1	24	7
- bed1	25	47	52	64	84	83
- bed2	28	51	52	65	83	82
- roof	1136	1117	1252	1225	1320	1293
Total consumption	1377	1484	1618	1638	1839	1764

Succeeding simulations can be performed to determine the variation in summer's cooling energy.

#### 4.12.4 Large house

Increasing the complexity of the models we now turn to the training directory *house/svph* which is an example of a moderate size dwelling based on a direct gain house in Milton Keynes. It has become a *de facto* modelling standard within the UK.

The directory structure, as for other exemplars described above, is an example of using several subdirectories to hold different portions of the problem definition. The benefit of this is that each directory has only a limited number of files.

```
training/house/svph
'-----configuration (cfg)
'-----control (ctl)
'-----networks
'-----zones
```

#### 4.12.5 Test cells

To be completed.

#### 4.12.6 Special focus

There are a number of specialised facilities within ESP-r which are provided for expert users and those who require additional detail in their simulation work. Several examples are given in the exemplars. One example relates to the thermophysical property replacement facility.

It is based on the *simple\_building* problem. The situation modelled in *constr/tp\_sub* is that the conductivity of the glass wool in some of the external walls is increased when the internal air temperature rises above a certain temperature (20°C). This is obviously not a real situation, but a similar situation could occur if the conductivity of a particular constructional material was sensitive to temperature.

An additional entry (*glasswool\_mod*, #282) has been made in the primitives database (*tp\_subs.pdb*). This is similar to *glasswool* (#211) but with increased conductivity. A new entry has also been made in the multi-constructional database (*tp\_subc.mlc*) which is for *ext\_wall\_mod*. This is the same as for the entry for *extern\_wall* except that it uses the modified properties of *glasswool*.

The control file demonstrates the activation of the replacement constructions. For the space named *reception*, constructions 'south', 'east' and 'north', and for the office space, constructions 'North\_w' and 'West\_w', use the replacement construction whenever the room temperature exceeds 20°C. In the control file, control function 1 (assigned to the *reception*) has a 'nested' control function 3 which gives details of the thermophysical property control. Similarly, control function 2 (for the office) has a 'nested' control function 4.

#### 4.12.7 Office block

This session switches the focus to full scale commercial buildings with a two level office block located in the north-east of Scotland. The 17-zone model makes use of mass flow simulation and opening of windows to control summer overheating. Images of the problem (in gif format) are included in the *images* directory.

To access the problem definitions go into the configuration directory. Within the configuration directory is a file *office.log* which should be viewed via UNIX or project manager facilities.

As this is a large problem it is recommended that simulations be kept to a few days. In summer simulations you will note that the zone temperatures are to some extent a function of wind velocity and direction.

#### **4.12.8 Plant**

To be completed.



# **Section Five**

## **Theoretical basis and validity of the ESP-r system**

### **Contents**

- 5.0 Introduction**
- 5.1 Theoretical basis**
- 5.2 Validity**
- 5.3 Model value**

## 5.0 Introduction

A comprehensive description of ESP-r's mathematical model, and the verification tests applied to it, would occupy much space, and so is not undertaken here. Instead, ESP-r's theory is stated conceptually and the various publications covering theory and validity are referenced.

### 5.1 Theoretical basis

ESP-r uses an advanced numerical method to integrate the various equation types (algebraic, ordinary differential and partial differential) which can be used to represent heat and mass balances within buildings. The system is non-building type specific and can handle any plant system as long as the necessary component models are installed in the plant components' database. Components, if missing, can be added by a user so that they become available for selection to participate in any multi-component plant configuration. *But since component models must conform to state-space formulations, new component derivation and insertion is often a non-trivial task - the price of plant modelling in the transient domain.*

In addition to the usual energy analysis features (comfort assessment, condensation checks, and the like), ESP-r can handle the spectral analysis of glazing systems which include thin films, time varying shading caused by site obstructions, solar ray tracing, pressure and buoyancy induced air movement and complex, distributed control systems.

A conceptual explanation of ESP-r's calculation technique would go something like:

The system offers a way to rigorously analyse the energy performance of a building and its environmental control systems. For each observable energy flow-path in the real world, ESP-r has a corresponding mathematical structure. Within a simulation, a special numerical technique ensures that all flow-paths evolve simultaneously to fully preserve the important spatial and temporal relationships. Stated briefly, ESP-r will accept some building/plant description in terms of 3-D geometry, construction, usage and control. This continuous system is then made discrete by division into many small, but finite, volumes of space - perhaps as many as 10,000 for a medium sized building. These finite volumes will represent the various regions of the building and plant within and between which energy and mass can flow. Throughout any subsequent simulation, ESP-r will track the energy and mass balance for all finite volumes as they evolve under the influence of the system boundary conditions (climate & control) and the constraints imposed by the inter-volume links. This technique ensures that all regions of the building are correctly connected across space and time and so any excitation at some point in space or time will have the correct causal effect.

The following publications detail the theory and structure of ESP-r:

Clarke J A, *Energy Simulation in Building Design*, Adam Hilger Ltd, Bristol and Boston, 1985.

Hensen J L M On the Thermal Interaction of Building Structure and Heating and Ventilating System *PhD Thesis* University of Eindhoven, 1991.

ESP-r's mathematical approach is derived and the numerical method used to achieve the repetitive and simultaneous integration of each flow-path over time is explained.



As described in Section One, ESRU maintains a list of bibliographic references, describing much of ESP-r's technical detail and philosophy. This list is available from ESRU on request.

## 5.2 Validity

Many model users do not yet appreciate the complexities of large scale energy model validation. Indeed it is probably true that absolute declarations of validity will never be possible. This is because the data used to describe the problem is itself subject to great uncertainty, and because the combinatorial links between input assumptions, logic representations, mathematical techniques and output interpretations is very large. It is now widely recognised that confidence levels can only be improved by developing verification *methodologies* and by repeatedly undertaking studies which aim to verify discrete aspects of a model under different operating conditions. In this respect ESP-r has a good track record. It was/is a participant model in the International Energy Agency's Annex 1, 4 and 10 projects concerned with inter-model and empirical model verification in both building and systems simulation modes. ESP-r has also been tested by several organisations external to ESRU and found to agree well with known analytical solutions and monitored data sets. On the basis of these findings the program has been declared the European Reference Model for Passive Solar Architectural Design and has been examined extensively in a SERC (now EPSRC) funded research project to develop a model verification methodology. ESP-r has also been well tested within the EC's PASSYS project. Several validation reports have been generated at ESRU and elsewhere. These can be found in the previous reference.

## 5.3 Model value

ESP-r is a state-of-the-art model which allows the rapid performance assessment of proposed building designs incorporating traditional and/or advanced energy features. For the first time, a user is able to conduct a high integrity, first principle appraisal whilst modelling all aspects of the energy subsystem simultaneously and in the transient domain. Indeed many design problems (for example fabric design, comfort or condensation assessment, control system appraisal, etc.) can only be meaningfully assessed when considered in this manner, as one portion of some complex set of interactions. That is, a piecemeal approach, in which a particular region is considered in isolation, is totally inappropriate and often misleading. At an early design stage a model such as ESP-r is particularly powerful since it can be used to quantify the performance impact of the site, the building geometry and construction; all factors which have considerable impact on operational performance and costs. Then, at the more detailed design stage, the model allows the designer to focus on issues of control and comfort.