

Figure 1: The EKS project workplan.

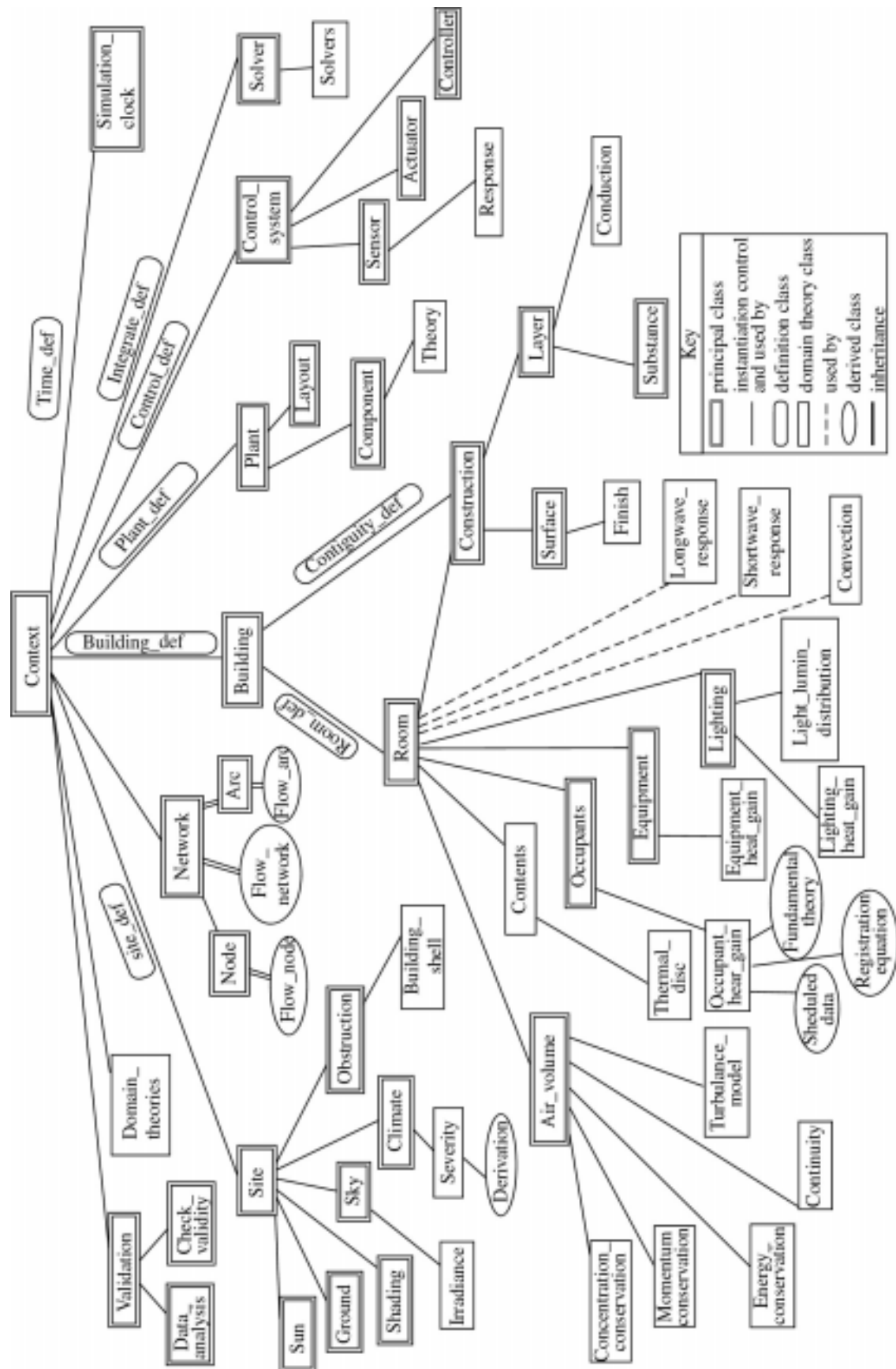


Figure 2: The EKS class taxonomy.

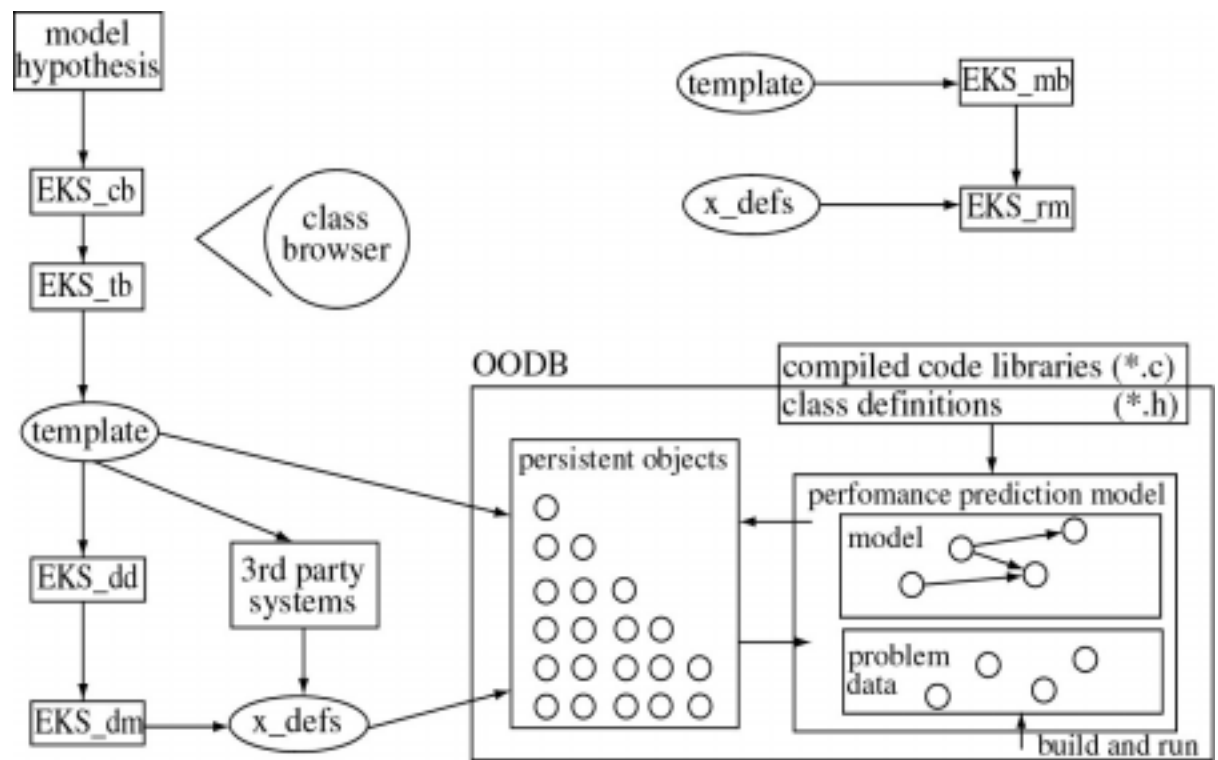


Figure 3: Architecture of the EKS system.

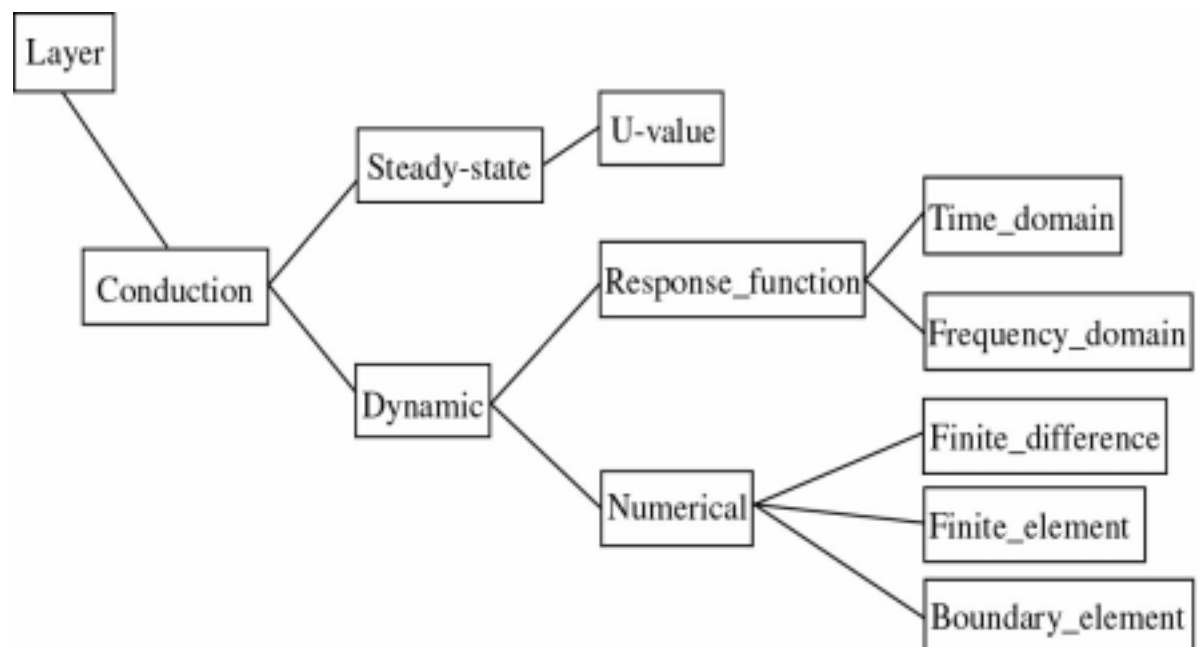


Figure 4: Derived classes of "Conduction".

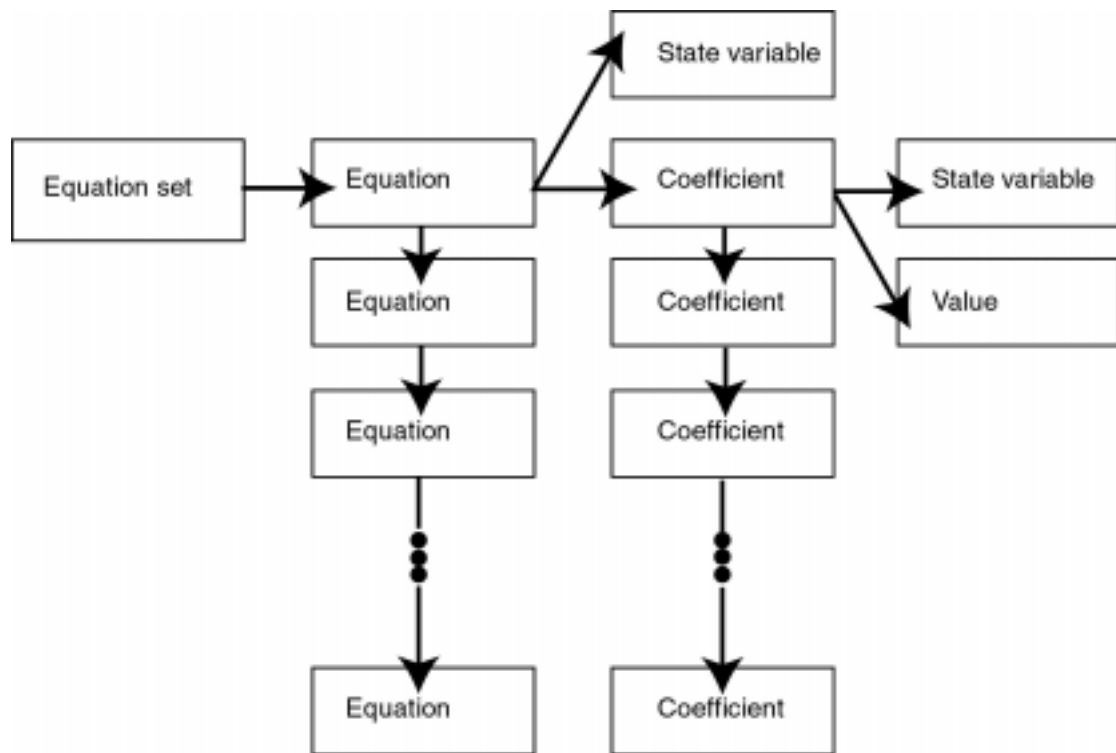


Figure 5: Transport class dependency structure.

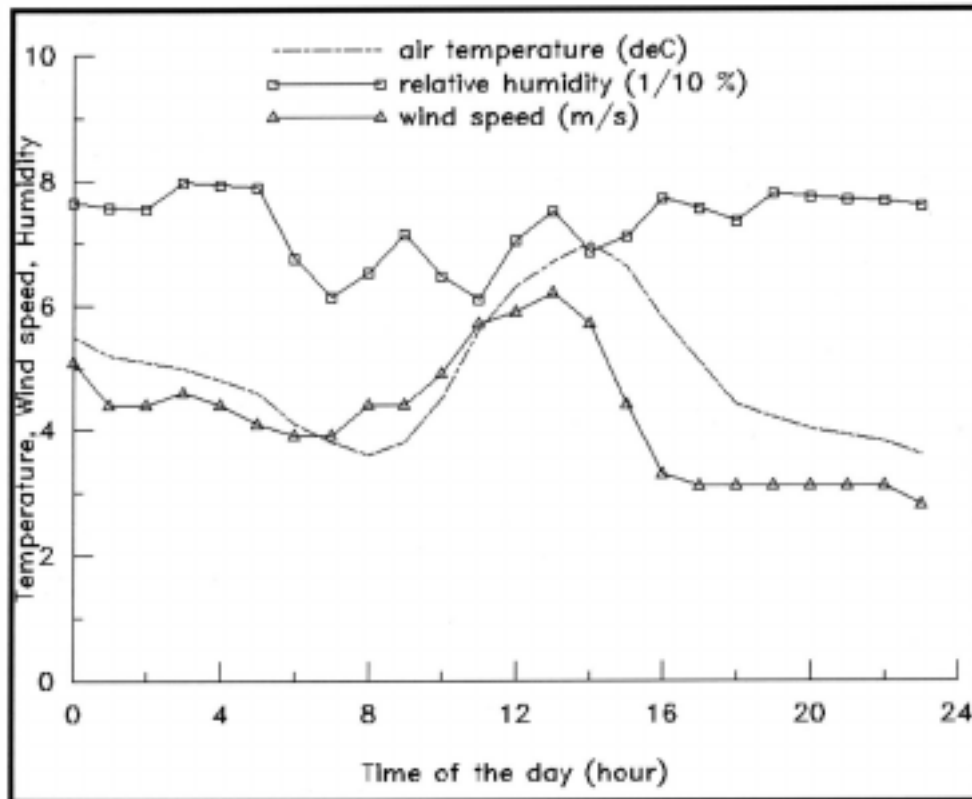


Figure 6a: Output from a simple site program ("Context_1a").

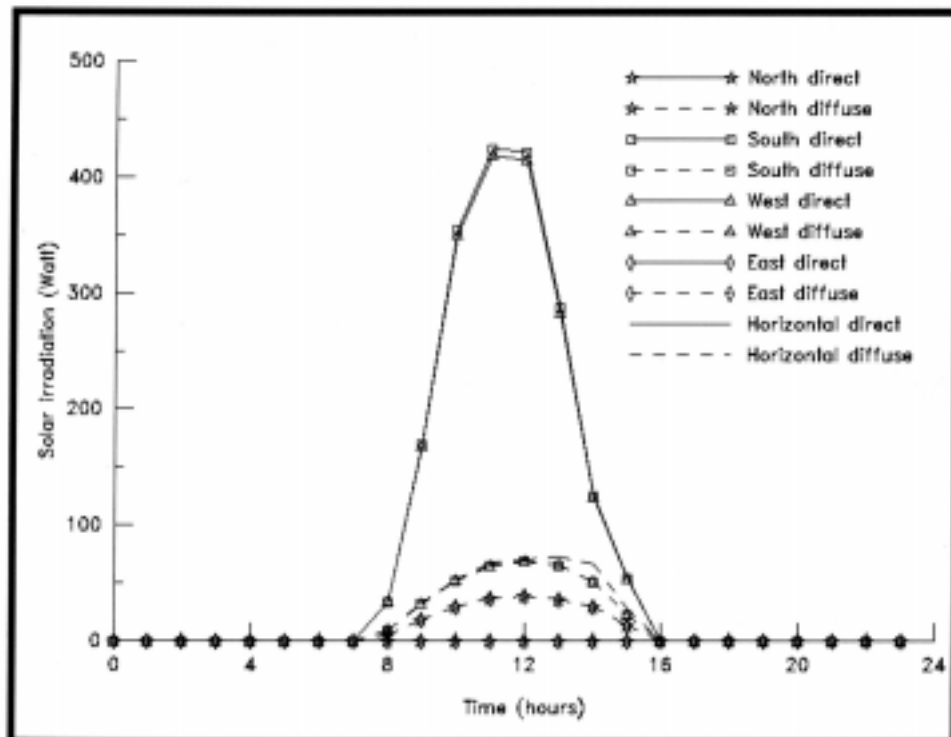


Figure 6b: Output from a detailed site program ("Context_1b").

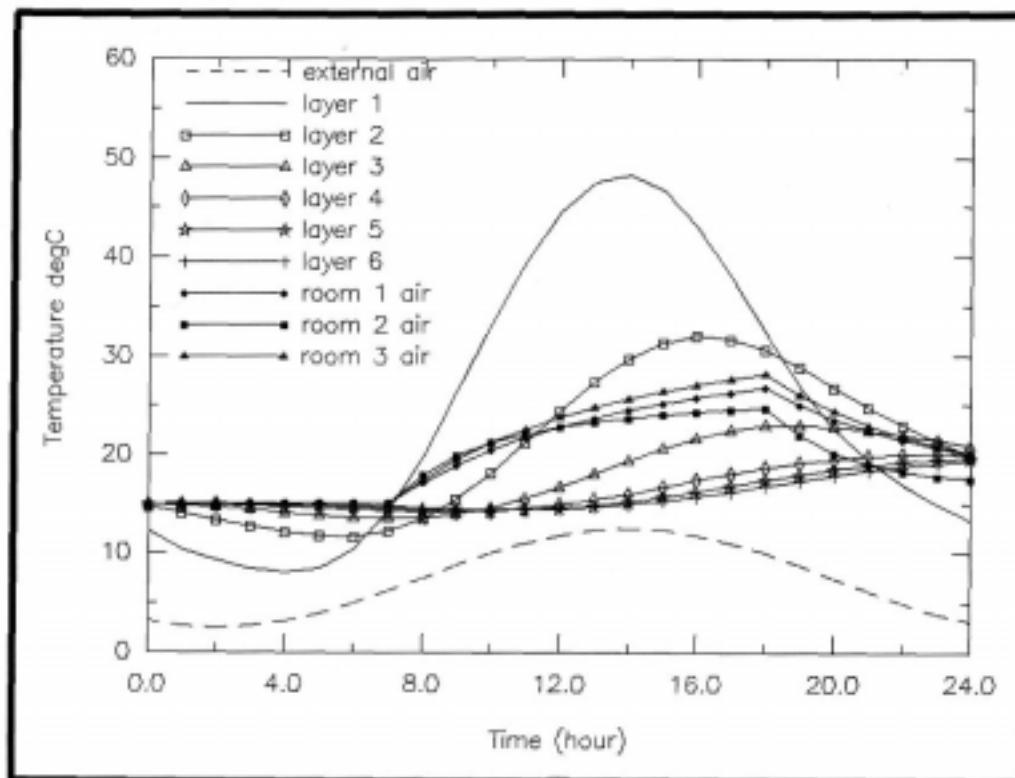
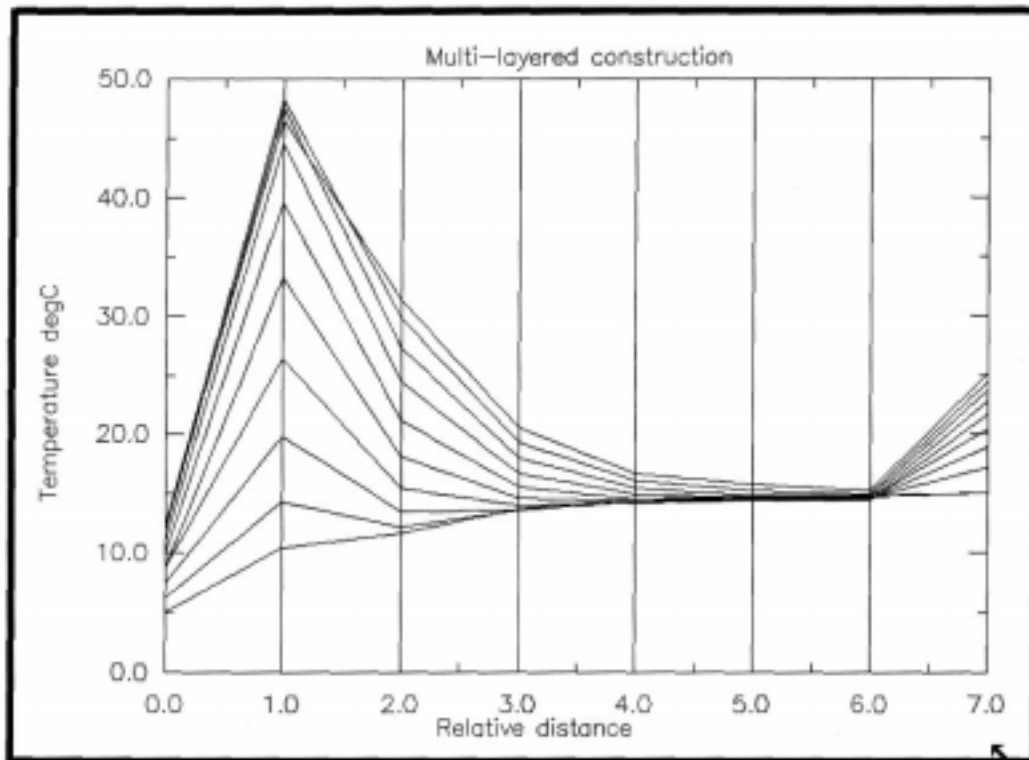


Figure 7: Output from a dynamic construction program ("Context_3a").

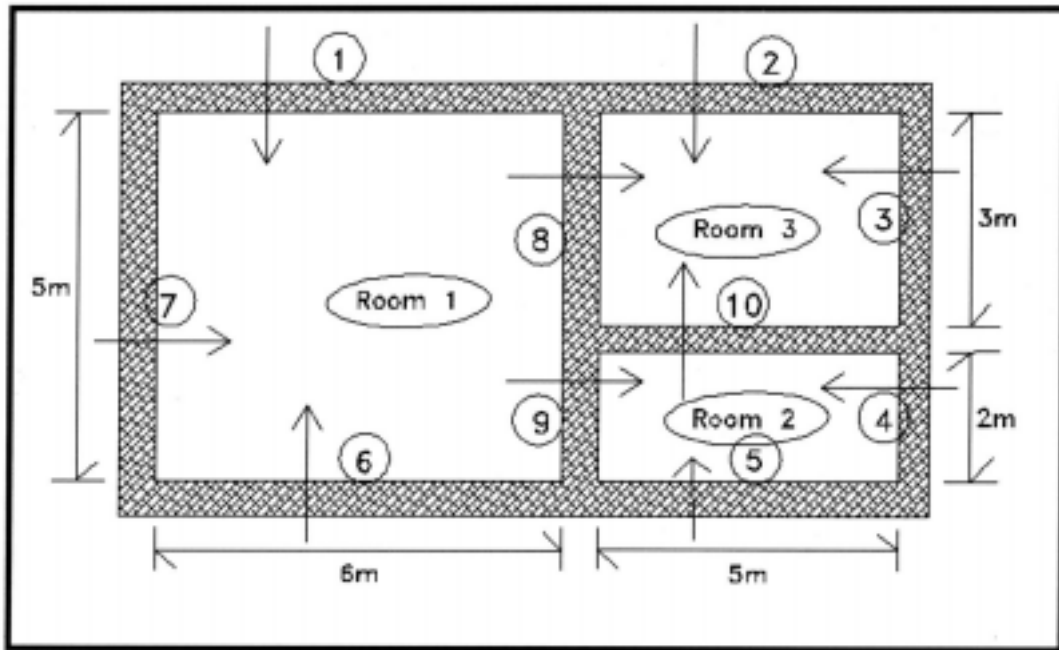


Figure 8a: Multi-zone problem for demonstration EKS program.

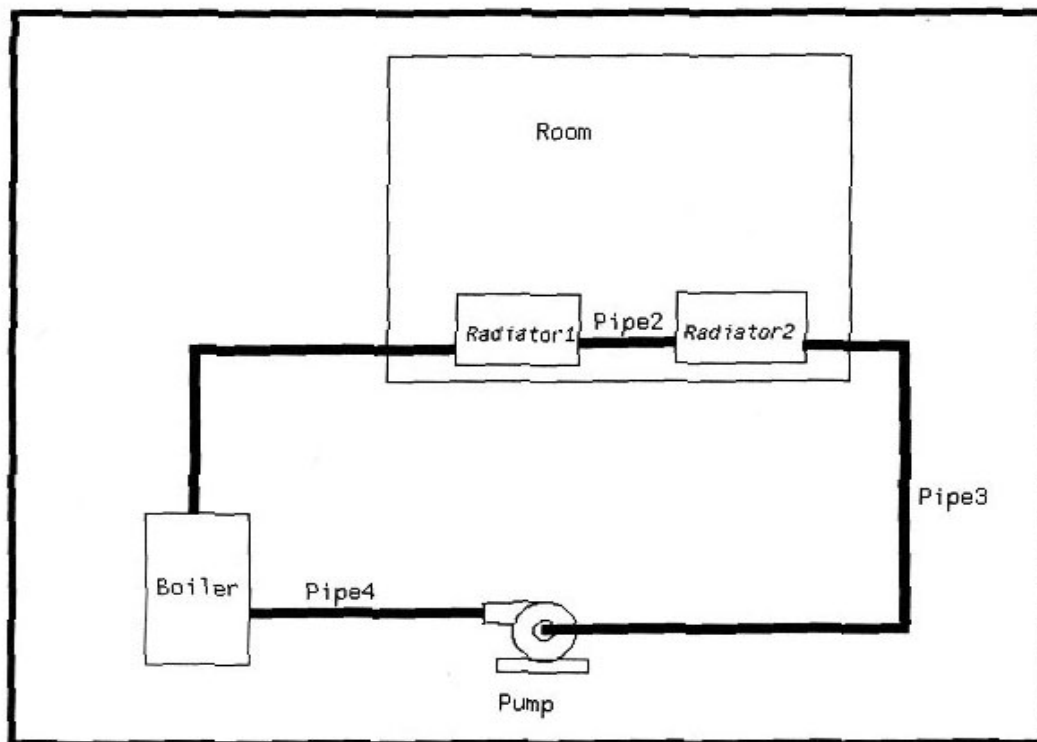


Figure 8b: Plant layout for EKS demonstration program.